

SLC12A4 Polyclonal Antibody

Catalog # AP63696

Product Information

Application	WB, IHC-P
Primary Accession	Q9UP95
Reactivity	Human, Mouse, Rat
Host	Rabbit
Clonality	Polyclonal
Calculated MW	120650

Additional Information

Gene ID	6560
Other Names	Solute carrier family 12 member 4 (Electroneutral potassium-chloride cotransporter 1) (Erythroid K-Cl cotransporter 1) (hKCC1)
Dilution	WB~~WB 1:1000-2000, IHC 1:100-200 IHC-P~~N/A
Format	Liquid in PBS containing 50% glycerol, 0.5% BSA and 0.09% (W/V) sodium azide.
Storage Conditions	-20°C

Protein Information

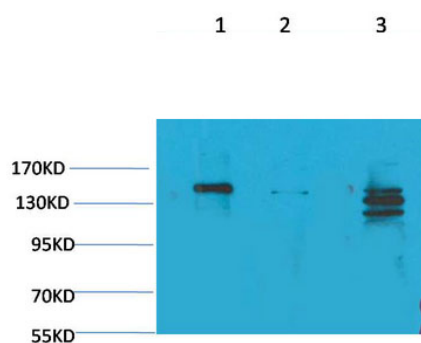
Name	SLC12A4 (HGNC:10913)
Function	Mediates electroneutral potassium-chloride cotransport when activated by cell swelling (PubMed: 35759661). May contribute to cell volume homeostasis in single cells (PubMed: 10913127 , PubMed: 34031912). May be involved in the regulation of basolateral Cl(-) exit in NaCl absorbing epithelia (By similarity).
Cellular Location	Cell membrane; Multi-pass membrane protein
Tissue Location	Ubiquitous (PubMed:8663127, PubMed:9516379). Levels are much higher in erythrocytes from patients with Hb SC and Hb SS compared to normal AA erythrocytes (PubMed:9516379). This may contribute to red blood cell dehydration and to the manifestation of sickle cell disease by increasing the intracellular concentration of HbS (PubMed:9516379).

Background

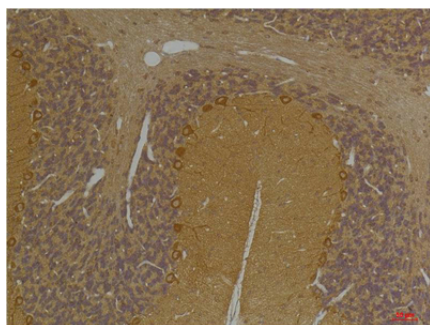
Mediates electroneutral potassium-chloride cotransport when activated by cell swelling. May contribute to cell volume homeostasis in single cells. May be involved in the regulation of basolateral Cl(-) exit in NaCl

absorbing epithelia (By similarity). Isoform 4 has no transport activity.

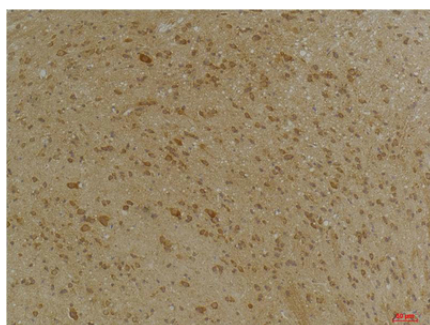
Images



Western blot analysis of 1) Rat Brain Tissue, 2) Mouse Brain Tissue, 3) Hela with SLC12A4 Rabbit pAb diluted at 1:2,000.



Immunohistochemical analysis of paraffin-embedded Rat Brain Tissue using SLC12A4 Rabbit pAb diluted at 1:200.



Immunohistochemical analysis of paraffin-embedded Mouse Brain Tissue using SLC12A4 Rabbit pAb diluted at 1:200.

Please note: All products are 'FOR RESEARCH USE ONLY. NOT FOR USE IN DIAGNOSTIC OR THERAPEUTIC PROCEDURES'.