

# JAK1 mouse Monoclonal Antibody(7G6)

Catalog # AP63728

## Product Information

---

Application	IHC-P
Primary Accession	<a href="#">P23458</a>
Reactivity	Human, Rat, Mouse
Host	Mouse
Clonality	Monoclonal
Calculated MW	133277

## Additional Information

---

Gene ID	3716
Other Names	JAK1
Dilution	IHC-P~~N/A
Format	Liquid in PBS containing 50% glycerol, 0.5% BSA and 0.09% (W/V) sodium azide.
Storage Conditions	-20°C

## Protein Information

---

Name	JAK1
Synonyms	JAK1A, JAK1B
Function	<p>Tyrosine kinase of the non-receptor type, involved in the IFN-alpha/beta/gamma signal pathway (PubMed:<a href="#">16239216</a>, PubMed:<a href="#">28111307</a>, PubMed:<a href="#">32750333</a>, PubMed:<a href="#">7615558</a>, PubMed:<a href="#">8232552</a>). Kinase partner for the interleukin (IL)-2 receptor (PubMed:<a href="#">11909529</a>) as well as interleukin (IL)-10 receptor (PubMed:<a href="#">12133952</a>). Kinase partner for the type I interferon receptor IFNAR2 (PubMed:<a href="#">16239216</a>, PubMed:<a href="#">28111307</a>, PubMed:<a href="#">32750333</a>, PubMed:<a href="#">7615558</a>, PubMed:<a href="#">8232552</a>). In response to interferon-binding to IFNAR1-IFNAR2 heterodimer, phosphorylates and activates its binding partner IFNAR2, creating docking sites for STAT proteins (PubMed:<a href="#">7759950</a>). Directly phosphorylates STAT proteins but also activates STAT signaling through the transactivation of other JAK kinases associated with signaling receptors (PubMed:<a href="#">16239216</a>, PubMed:<a href="#">32750333</a>, PubMed:<a href="#">8232552</a>).</p>
Cellular Location	Endomembrane system; Peripheral membrane protein. Note=Wholly intracellular, possibly membrane associated

**Tissue Location**

Expressed at higher levels in primary colon tumors than in normal colon tissue. The expression level in metastatic colon tumors is comparable to the expression level in normal colon tissue

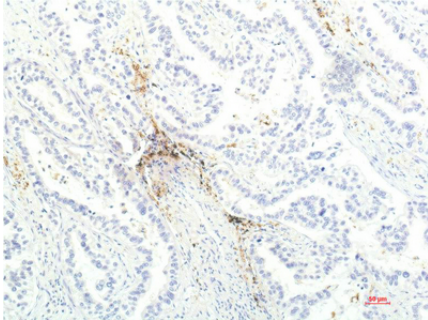
**Background**

---

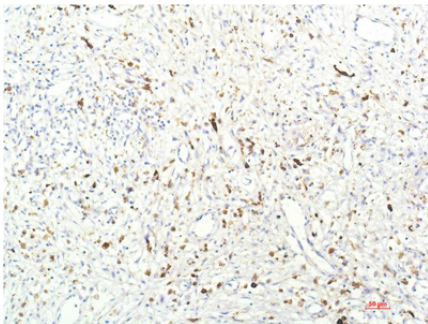
Tyrosine kinase of the non-receptor type, involved in the IFN-alpha/beta/gamma signal pathway (PubMed:[7615558](#)). Kinase partner for the interleukin (IL)-2 receptor (PubMed:[11909529](#)) as well as interleukin (IL)-10 receptor (PubMed:[12133952](#)).

**Images**

---



Immunohistochemical analysis of paraffin-embedded Human Lung Carcinoma Tissue using JAK1 Mouse mAb diluted at 1:200.



Immunohistochemical analysis of paraffin-embedded Human Breast Carcinoma Tissue using JAK1 Mouse mAb diluted at 1:200.

Please note: All products are 'FOR RESEARCH USE ONLY. NOT FOR USE IN DIAGNOSTIC OR THERAPEUTIC PROCEDURES'.