

Bax mouse Monoclonal Antibody(1C1)

Catalog # AP63743

Product Information

Application	WB, IHC-P
Primary Accession	Q07812
Reactivity	Human, Rat, Mouse
Host	Mouse
Clonality	Monoclonal
Calculated MW	21184

Additional Information

Gene ID	581
Other Names	BAX
Dilution	WB~~WB 1:1000-2000, IHC 1:100-200 IHC-P~~N/A
Format	Liquid in PBS containing 50% glycerol, 0.5% BSA and 0.09% (W/V) sodium azide.
Storage Conditions	-20°C

Protein Information

Name	BAX
Synonyms	BCL2L4
Function	<p>Plays a role in the mitochondrial apoptotic process (PubMed: 10772918, PubMed:11060313, PubMed:16113678, PubMed:16199525, PubMed:18948948, PubMed:21199865, PubMed:21458670, PubMed:25609812, PubMed:36361894, PubMed:8358790, PubMed:8521816). Under normal conditions, BAX is largely cytosolic via constant retrotranslocation from mitochondria to the cytosol mediated by BCL2L1/Bcl-xL, which avoids accumulation of toxic BAX levels at the mitochondrial outer membrane (MOM) (PubMed:21458670). Under stress conditions, undergoes a conformation change that causes translocation to the mitochondrion membrane, leading to the release of cytochrome c that then triggers apoptosis (PubMed:10772918, PubMed:11060313, PubMed:16113678, PubMed:16199525, PubMed:18948948, PubMed:21199865, PubMed:21458670, PubMed:25609812, PubMed:8358790, PubMed:8521816). Promotes activation of CASP3, and thereby apoptosis (PubMed:10772918, PubMed:11060313, PubMed:16113678, PubMed:16199525, PubMed:18948948, PubMed:21199865, PubMed:21458670, PubMed:25609812, PubMed:8358790, PubMed:8521816).</p>

Cellular Location

[Isoform Alpha]: Mitochondrion outer membrane; Single-pass membrane protein. Cytoplasm. Nucleus Note=Colocalizes with 14-3-3 proteins in the cytoplasm. Under stress conditions, undergoes a conformation change that causes release from JNK-phosphorylated 14-3-3 proteins and translocation to the mitochondrion membrane. Upon Sendai virus infection, recruited to the mitochondrion through interaction with IRF3 (PubMed:25609812) [Isoform Gamma]: Cytoplasm.

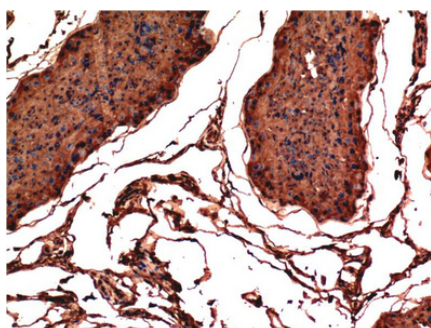
Tissue Location

Expressed in a wide variety of tissues. Isoform Psi is found in glial tumors. Isoform Alpha is expressed in spleen, breast, ovary, testis, colon and brain, and at low levels in skin and lung Isoform Sigma is expressed in spleen, breast, ovary, testis, lung, colon, brain and at low levels in skin. Isoform Alpha and isoform Sigma are expressed in pro-myelocytic leukemia, histiocytic lymphoma, Burkitt's lymphoma, T-cell lymphoma, lymphoblastic leukemia, breast adenocarcinoma, ovary adenocarcinoma, prostate carcinoma, prostate adenocarcinoma, lung carcinoma, epidermoid carcinoma, small cell lung carcinoma and colon adenocarcinoma cell lines

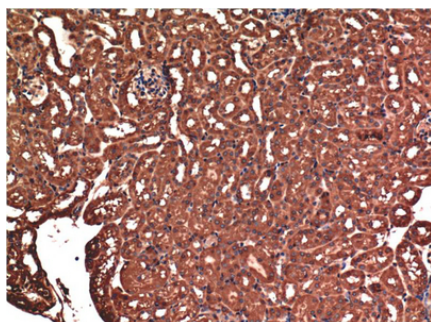
Background

Plays a role in the mitochondrial apoptotic process. Under normal conditions, BAX is largely cytosolic via constant retrotranslocation from mitochondria to the cytosol mediated by BCL2L1/Bcl-xL, which avoids accumulation of toxic BAX levels at the mitochondrial outer membrane (MOM) (PubMed:[21458670](#)). Under stress conditions, undergoes a conformation change that causes translocation to the mitochondrion membrane, leading to the release of cytochrome c that then triggers apoptosis. Promotes activation of CASP3, and thereby apoptosis.

Images

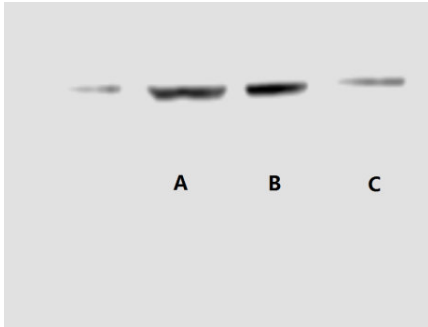
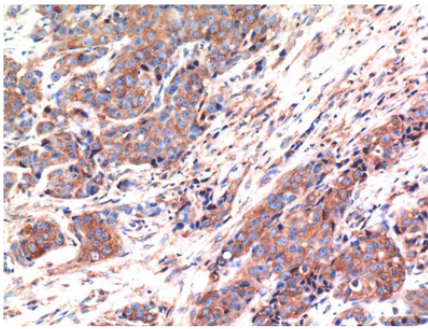


Immunohistochemical analysis of paraffin-embedded Rat Testis Tissue using Bax Mouse mAb diluted at 1:200.

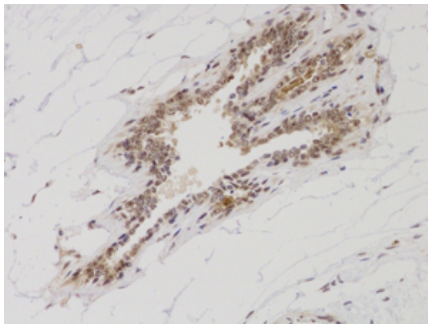


Immunohistochemical analysis of paraffin-embedded Mouse Kidney Tissue using Bax Mouse mAb diluted at 1:200.

Immunohistochemical analysis of paraffin-embedded Human Breast Carcinoma Tissue using Bax Mouse mAb diluted at 1:200.



Western blot detection of Bax in human breast cancer cell line MCF-7(A), MDA-MB-231(B) and Cal51 (C) using Bax mouse mAb (1:1000 diluted). Predicted band size: 20kDa. Observed band size: 20kDa. Picture was kindly provided by our customer from Tianjin Medical University Cancer Institute and Hospital



Immunohistochemical analysis of paraffin-embedded Human breast cancer. 1, Using Bax Mouse mAb diluted at 1:200 (4°, overnight). 2, High-pressure and temperature Citric acid, pH6.0 was used for antigen retrieval. 3, Secondary antibody was diluted at 1:200 (room temperature, 50min). Picture was kindly provided by our customer from Tianjin Medical University Cancer Institute and Hospital

Please note: All products are 'FOR RESEARCH USE ONLY. NOT FOR USE IN DIAGNOSTIC OR THERAPEUTIC PROCEDURES'.