

HDGF Antibody (C-term)

Purified Rabbit Polyclonal Antibody (Pab)

Catalog # AP6375b

Product Information

Application	WB, IHC-P, IF, E
Primary Accession	P51858
Reactivity	Human, Mouse
Host	Rabbit
Clonality	Polyclonal
Isotype	Rabbit IgG
Clone Names	RB14546
Calculated MW	26788
Antigen Region	171-197

Additional Information

Gene ID	3068
Other Names	Hepatoma-derived growth factor, HDGF, High mobility group protein 1-like 2, HMG-1L2, HDGF, HMG1L2
Target/Specificity	This HDGF antibody is generated from rabbits immunized with a KLH conjugated synthetic peptide between 171-197 amino acids from the C-terminal region of human HDGF.
Dilution	WB~~1:1000 IHC-P~~1:100~500 IF~~1:10~50 E~~Use at an assay dependent concentration.
Format	Purified polyclonal antibody supplied in PBS with 0.09% (W/V) sodium azide. This antibody is prepared by Saturated Ammonium Sulfate (SAS) precipitation followed by dialysis against PBS.
Storage	Maintain refrigerated at 2-8°C for up to 2 weeks. For long term storage store at -20°C in small aliquots to prevent freeze-thaw cycles.
Precautions	HDGF Antibody (C-term) is for research use only and not for use in diagnostic or therapeutic procedures.

Protein Information

Name	HDGF
Synonyms	HMG1L2
Function	[Isoform 1]: Acts as a transcriptional repressor (PubMed: 17974029). Has

mitogenic activity for fibroblasts (PubMed:[11751870](#), PubMed:[26845719](#)).
Heparin-binding protein (PubMed:[15491618](#)).

Cellular Location

[Isoform 1]: Nucleus. Cytoplasm. Secreted, extracellular exosome.
Note=Secreted by exosomes and is located inside the exosome (PubMed:27926477). May also be secreted as free protein via an as yet unknown pathway (PubMed:27926477) [Isoform 3]: Nucleus. Cytoplasm Secreted, extracellular exosome Note=Secreted by exosomes and is located on the outer exosome surface

Tissue Location

Ubiquitous..

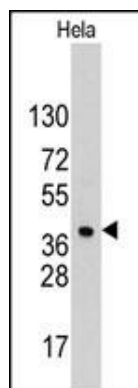
Background

HDGF is a member of the hepatoma-derived growth factor family. This protein has mitogenic and DNA-binding activity and may play a role in cellular proliferation and differentiation.

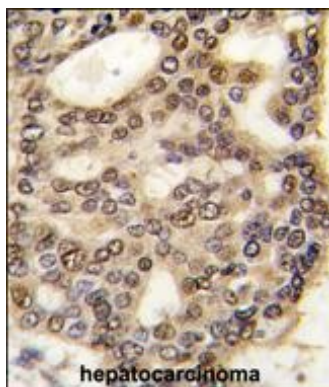
References

Thakar,K., FEBS J. 275 (7), 1411-1426 (2008)
Chang,K.C.,Int. J. Cancer 121 (5), 1059-1065 (2007)
Yamamoto,S., Ann. Surg. Oncol. 14 (7), 2141-2149 (2007)
Uyama,H., Clin. Cancer Res. 12 (20 PT 1), 6043-6048 (2006)

Images

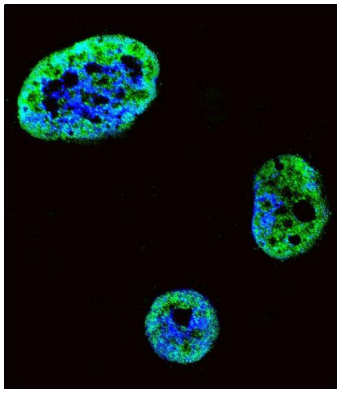


Western blot analysis of anti-HDGF Pab (Cat.#AP6375b) in HeLa cell line lysates (35ug/lane). HDGF(arrow) was detected using the purified Pab.



Formalin-fixed and paraffin-embedded human hepatocarcinoma tissue reacted with HDGF antibody (C-term) (Cat.#AP6375b), which was peroxidase-conjugated to the secondary antibody, followed by DAB staining. This data demonstrates the use of this antibody for immunohistochemistry; clinical relevance has not been evaluated.

Confocal immunofluorescent analysis of HDGF Antibody (C-term)(Cat#AP6375b) with SK-BR-3 cell followed by Alexa Fluor 488-conjugated goat anti-rabbit IgG (green).DAPI was used to stain the cell nuclear (blue).



Please note: All products are 'FOR RESEARCH USE ONLY. NOT FOR USE IN DIAGNOSTIC OR THERAPEUTIC PROCEDURES'.