

LC3A mouse Monoclonal Antibody(5G10)

Catalog # AP63762

Product Information

Application	WB, IHC-P, IF
Primary Accession	Q9H492
Reactivity	Human, Rat, Mouse
Host	Mouse
Clonality	Monoclonal
Calculated MW	14272

Additional Information

Gene ID	84557
Other Names	Microtubule-associated proteins 1A/1B light chain 3A (Autophagy-related protein LC3 A) (Autophagy-related ubiquitin-like modifier LC3 A) (MAP1 light chain 3-like protein 1) (MAP1A/MAP1B light chain 3 A) (MAP1A/MAP1B LC3 A) (Microtubule-associated protein 1 light chain 3 alpha)
Dilution	WB~~WB 1:1000-2000, IHC 1:100-200 IF 1:200 IHC-P~~N/A IF~~1:50~200
Format	Liquid in PBS containing 50% glycerol, 0.5% BSA and 0.09% (W/V) sodium azide.
Storage Conditions	-20°C

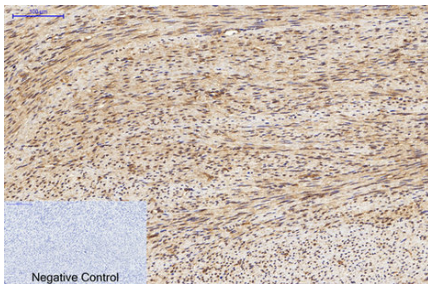
Protein Information

Name	MAP1LC3A
Function	Ubiquitin-like modifier involved in formation of autophagosomal vacuoles (autophagosomes) (PubMed: 20713600 , PubMed: 24290141). While LC3s are involved in elongation of the phagophore membrane, the GABARAP/GATE-16 subfamily is essential for a later stage in autophagosome maturation (PubMed: 20713600). Through its interaction with the reticulophagy receptor TEX264, participates in the remodeling of subdomains of the endoplasmic reticulum into autophagosomes upon nutrient stress, which then fuse with lysosomes for endoplasmic reticulum turnover (PubMed: 31006537 , PubMed: 31006538).
Cellular Location	Cytoplasmic vesicle, autophagosome membrane; Lipid-anchor. Endomembrane system; Lipid-anchor. Cytoplasm, cytoskeleton {ECO:0000250 UniProtKB:Q91VR7}. Note=LC3-II binds to the autophagic membranes.
Tissue Location	Most abundant in heart, brain, liver, skeletal muscle and testis but absent in

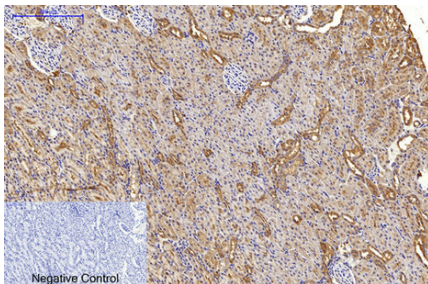
Background

Ubiquitin-like modifier involved in formation of autophagosomal vacuoles (autophagosomes) (PubMed:[20713600](#), PubMed:[24290141](#)). Whereas LC3s are involved in elongation of the phagophore membrane, the GABARAP/GATE-16 subfamily is essential for a later stage in autophagosome maturation (PubMed:[20713600](#)).

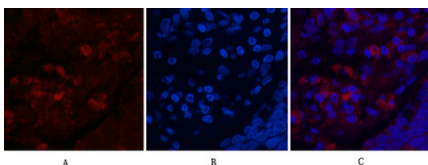
Images



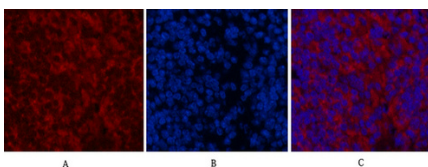
Immunohistochemical analysis of paraffin-embedded Human-uterus tissue. 1,LC3A Mouse Monoclonal Antibody(5G10) was diluted at 1:200(4°C,overnight). 2, Sodium citrate pH 6.0 was used for antibody retrieval(>98°C,20min). 3,Secondary antibody was diluted at 1:200(room tempeRature, 30min). Negative control was used by secondary antibody only.



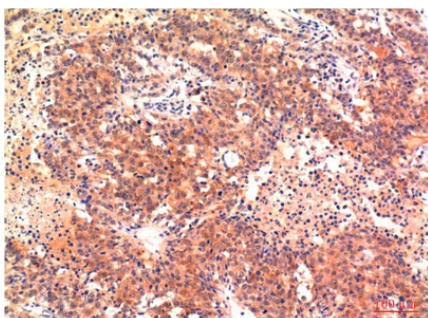
Immunohistochemical analysis of paraffin-embedded Rat-kidney tissue. 1,LC3A Mouse Monoclonal Antibody(5G10) was diluted at 1:200(4°C,overnight). 2, Sodium citrate pH 6.0 was used for antibody retrieval(>98°C,20min). 3,Secondary antibody was diluted at 1:200(room tempeRature, 30min). Negative control was used by secondary antibody only.



Immunofluorescence analysis of Human-lung-cancer tissue. 1,LC3A Mouse Monoclonal Antibody(5G10)(red) was diluted at 1:200(4°C,overnight). 2, Cy3 labled Secondary antibody was diluted at 1:300(room temperature, 50min).3, Picture B: DAPI(blue) 10min. Picture A:Target. Picture B: DAPI. Picture C: merge of A+B

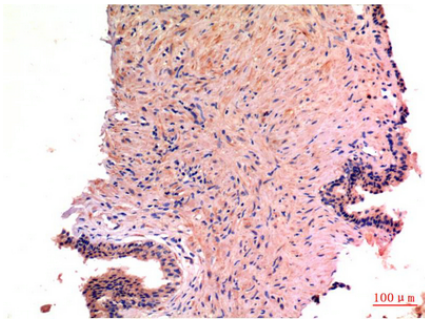


Immunofluorescence analysis of Mouse-spleen tissue. 1,LC3A Mouse Monoclonal Antibody(5G10)(red) was diluted at 1:200(4°C,overnight). 2, Cy3 labled Secondary antibody was diluted at 1:300(room temperature, 50min).3, Picture B: DAPI(blue) 10min. Picture A:Target. Picture B: DAPI. Picture C: merge of A+B

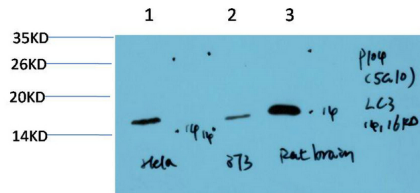


Immunohistochemical analysis of paraffin-embedded Human Hepatocarcinoma Tissue using LC3A Mouse mAb diluted at 1:200.

Immunohistochemical analysis of paraffin-embedded Human Prostate Carcinoma Tissue using LC3A Mouse



mAb diluted at 1:200.



Western blot analysis of 1) Hela Cell Lysate, 2) 3T3 Cell Lysate, 3) Rat Brain Tissue Lysate using LC3A Mouse mAb diluted at 1:1000.

Please note: All products are 'FOR RESEARCH USE ONLY. NOT FOR USE IN DIAGNOSTIC OR THERAPEUTIC PROCEDURES'.