

# Cyclin B1 mouse Monoclonal Antibody(1A5)

Catalog # AP63763

## Product Information

---

<b>Application</b>	IHC-P
<b>Primary Accession</b>	<a href="#">P14635</a>
<b>Reactivity</b>	Human, Rat, Mouse
<b>Host</b>	Mouse
<b>Clonality</b>	Monoclonal
<b>Calculated MW</b>	48337

## Additional Information

---

<b>Gene ID</b>	891
<b>Other Names</b>	CCNB1
<b>Dilution</b>	IHC-P~~N/A
<b>Format</b>	Liquid in PBS containing 50% glycerol, 0.5% BSA and 0.09% (W/V) sodium azide.
<b>Storage Conditions</b>	-20°C

## Protein Information

---

<b>Name</b>	CCNB1
<b>Synonyms</b>	CCNB
<b>Function</b>	Essential for the control of the cell cycle at the G2/M (mitosis) transition.
<b>Cellular Location</b>	Cytoplasm. Nucleus. Cytoplasm, cytoskeleton, microtubule organizing center, centrosome

## Background

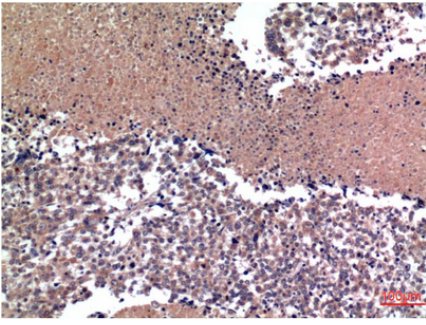
---

Essential for the control of the cell cycle at the G2/M (mitosis) transition.

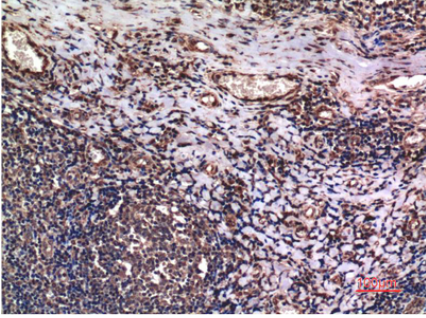
## Images

---

Immunohistochemical analysis of paraffin-embedded Human lung Tissue using Cyclin B1 Mouse mAb diluted at 1:200.



Immunohistochemical analysis of paraffin-embedded Human Tonsil Tissue using Cyclin B1 Mouse mAb diluted at 1:200.



Please note: All products are 'FOR RESEARCH USE ONLY. NOT FOR USE IN DIAGNOSTIC OR THERAPEUTIC PROCEDURES'.