

Cyclin B1 mouse Monoclonal Antibody(5C1)

Catalog # AP63771

Product Information

| | |
|--------------------------|------------------------|
| Application | IHC-P |
| Primary Accession | P14635 |
| Reactivity | Human, Rat, Mouse |
| Host | Mouse |
| Clonality | Monoclonal |
| Calculated MW | 48337 |

Additional Information

| | |
|---------------------------|-------------------------------------------------------------------------------|
| Gene ID | 891 |
| Other Names | CCNB1 |
| Dilution | IHC-P~~N/A |
| Format | Liquid in PBS containing 50% glycerol, 0.5% BSA and 0.09% (W/V) sodium azide. |
| Storage Conditions | -20°C |

Protein Information

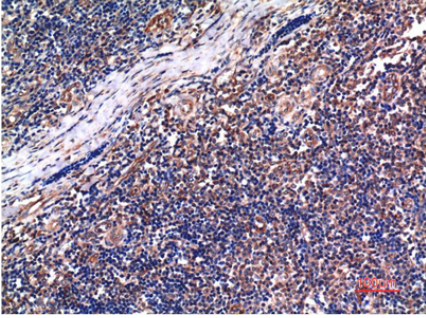
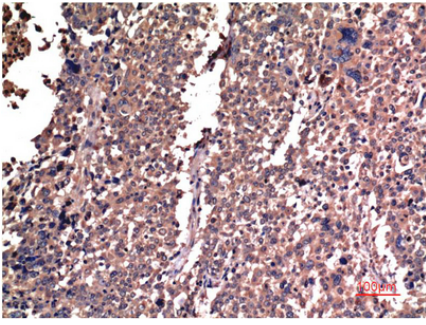
| | |
|--------------------------|----------------------------------------------------------------------------------------|
| Name | CCNB1 |
| Synonyms | CCNB |
| Function | Essential for the control of the cell cycle at the G2/M (mitosis) transition. |
| Cellular Location | Cytoplasm. Nucleus. Cytoplasm, cytoskeleton, microtubule organizing center, centrosome |

Background

Essential for the control of the cell cycle at the G2/M (mitosis) transition.

Images

Immunohistochemical analysis of paraffin-embedded Human Lung Carcinoma Tissue using Cyclin B1 Mouse mAb diluted at 1:200.



Immunohistochemical analysis of paraffin-embedded Human Tonsil Tissue using Cyclin B1 Mouse mAb diluted at 1:200.

Please note: All products are 'FOR RESEARCH USE ONLY. NOT FOR USE IN DIAGNOSTIC OR THERAPEUTIC PROCEDURES'.