

IkB α Rabbit Polyclonal Antibody

Catalog # AP63804

Product Information

Application	WB, IHC-P
Primary Accession	P25963
Reactivity	Human, Mouse, Rat
Host	Rabbit
Clonality	Polyclonal
Calculated MW	35609

Additional Information

Gene ID	4792
Other Names	NF-kappa-B inhibitor alpha (I-kappa-B-alpha) (IkB-alpha) (IkappaBalpha) (Major histocompatibility complex enhancer-binding protein MAD3)
Dilution	WB~~WB 1:500-2000,IHC-p 1:50-300 IHC-P~~WB 1:500-2000,IHC-p 1:50-300
Format	Liquid in PBS containing 50% glycerol, 0.5% BSA and 0.09% (W/V) sodium azide.
Storage Conditions	-20°C

Protein Information

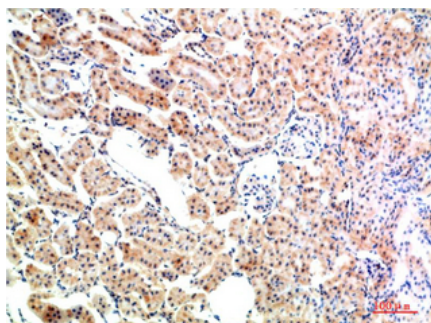
Name	NFKBIA
Synonyms	IKBA, MAD3, NFKBI
Function	Inhibits the activity of dimeric NF-kappa-B/REL complexes by trapping REL (RELA/p65 and NFKB1/p50) dimers in the cytoplasm by masking their nuclear localization signals (PubMed: 1493333 , PubMed: 36651806 , PubMed: 7479976). On cellular stimulation by immune and pro-inflammatory responses, becomes phosphorylated promoting ubiquitination and degradation, enabling the dimeric RELA to translocate to the nucleus and activate transcription (PubMed: 7479976 , PubMed: 7628694 , PubMed: 7796813 , PubMed: 7878466).
Cellular Location	Cytoplasm. Nucleus. Note=Shuttles between the nucleus and the cytoplasm by a nuclear localization signal (NLS) and a CRM1-dependent nuclear export.

Background

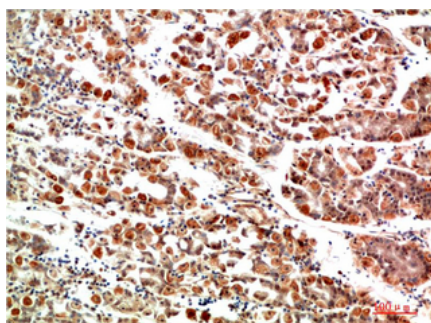
Inhibits the activity of dimeric NF-kappa-B/REL complexes by trapping REL dimers in the cytoplasm through masking of their nuclear localization signals. On cellular stimulation by immune and proinflammatory

responses, becomes phosphorylated promoting ubiquitination and degradation, enabling the dimeric RELA to translocate to the nucleus and activate transcription.

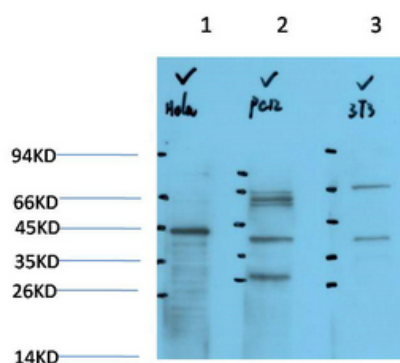
Images



Immunohistochemical analysis of paraffin-embedded Rat Kidney Tissue using IkB α Rabbit pAb diluted at 1:200



Immunohistochemical analysis of paraffin-embedded Human Stomach Tissue using IkB α Rabbit pAb diluted at 1:200



Western blot analysis of 1) Hela Cell Lysate, 2) PC12 Cell Lysate, 3) 3T3 Cell Lysate using IkB α Rabbit pAb diluted at 1:1000.

Please note: All products are 'FOR RESEARCH USE ONLY. NOT FOR USE IN DIAGNOSTIC OR THERAPEUTIC PROCEDURES'.