

# TTR mouse Monoclonal Antibody(3F2)

Catalog # AP63813

## Product Information

---

<b>Application</b>	WB, IHC-P
<b>Primary Accession</b>	<a href="#">P02766</a>
<b>Reactivity</b>	Human
<b>Host</b>	Mouse
<b>Clonality</b>	Monoclonal
<b>Calculated MW</b>	15887

## Additional Information

---

<b>Gene ID</b>	7276
<b>Other Names</b>	Transthyretin (ATTR) (Prealbumin) (TBPA)
<b>Dilution</b>	WB~~WB 1:500-2000,IHC-p 1:50-300 IHC-P~~N/A
<b>Format</b>	Liquid in PBS containing 50% glycerol, 0.5% BSA and 0.09% (W/V) sodium azide.
<b>Storage Conditions</b>	-20°C

## Protein Information

---

<b>Name</b>	TTR
<b>Synonyms</b>	PALB
<b>Function</b>	Thyroid hormone-binding protein. Probably transports thyroxine from the bloodstream to the brain.
<b>Cellular Location</b>	Secreted. Cytoplasm.
<b>Tissue Location</b>	Detected in serum and cerebrospinal fluid (at protein level). Highly expressed in choroid plexus epithelial cells Detected in retina pigment epithelium and liver

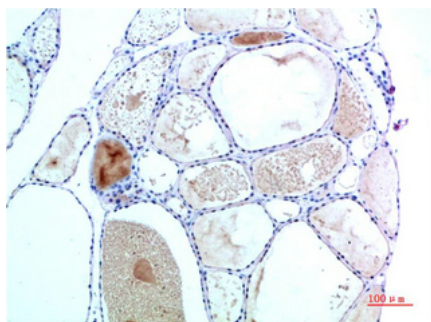
## Background

---

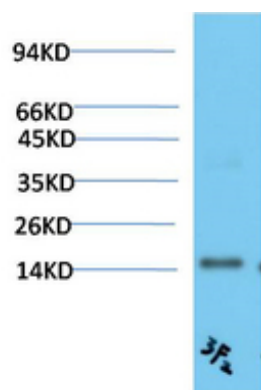
Thyroid hormone-binding protein. Probably transports thyroxine from the bloodstream to the brain.

## Images

---



Immunohistochemical analysis of paraffin-embedded Human Thyroid Tissue using TTR Mouse mAb diluted at 1:200



Western blot analysis of Human Serum using TTR Mouse mAb diluted at 1:2000

Please note: All products are 'FOR RESEARCH USE ONLY. NOT FOR USE IN DIAGNOSTIC OR THERAPEUTIC PROCEDURES'.