

# TTR mouse Monoclonal Antibody(4A12)

Catalog # AP63816

## Product Information

---

|                          |                        |
|--------------------------|------------------------|
| <b>Application</b>       | WB, IHC-P              |
| <b>Primary Accession</b> | <a href="#">P02766</a> |
| <b>Reactivity</b>        | Human                  |
| <b>Host</b>              | Mouse                  |
| <b>Clonality</b>         | Monoclonal             |
| <b>Calculated MW</b>     | 15887                  |

## Additional Information

---

|                           |   |
|---------------------------|---|
| <b>Gene ID</b>            | 7276  |
| <b>Other Names</b>        | Transthyretin (ATTR) (Prealbumin) (TBPA)                                      |
| <b>Dilution</b>           | WB~~WB 1:500-2000,IHC-p 1:50-300 IHC-P~~N/A                                   |
| <b>Format</b>             | Liquid in PBS containing 50% glycerol, 0.5% BSA and 0.09% (W/V) sodium azide. |
| <b>Storage Conditions</b> | -20°C   |

## Protein Information

---

|                          |   |
|--------------------------|---|
| <b>Name</b>              | TTR   |
| <b>Synonyms</b>          | PALB  |
| <b>Function</b>          | Thyroid hormone-binding protein. Probably transports thyroxine from the bloodstream to the brain.   |
| <b>Cellular Location</b> | Secreted. Cytoplasm.  |
| <b>Tissue Location</b>   | Detected in serum and cerebrospinal fluid (at protein level). Highly expressed in choroid plexus epithelial cells Detected in retina pigment epithelium and liver |

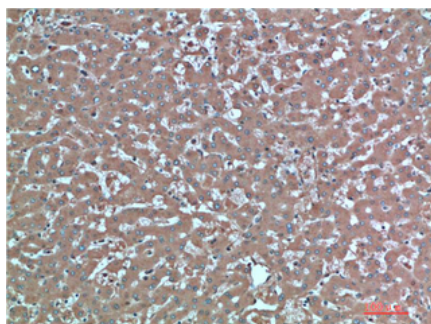
## Background

---

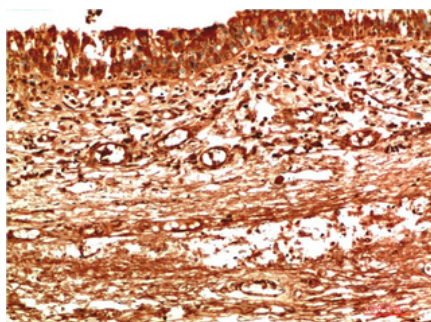
Thyroid hormone-binding protein. Probably transports thyroxine from the bloodstream to the brain.

## Images

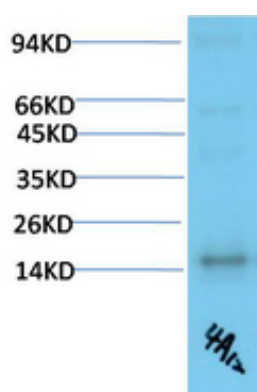
---



Immunohistochemical analysis of paraffin-embedded Human Liver Carcinoma Tissue using TTR Mouse mAb diluted at 1:200



Immunohistochemical analysis of paraffin-embedded Human Thyroid Tissue using TTR Mouse mAb diluted at 1:200



Western blot analysis of Human Serum using TTR Mouse mAb diluted at 1:2000.

Please note: All products are 'FOR RESEARCH USE ONLY. NOT FOR USE IN DIAGNOSTIC OR THERAPEUTIC PROCEDURES'.