

# IL1RN Antibody (C-term)

Purified Rabbit Polyclonal Antibody (Pab)

Catalog # AP6503b

## Product Information

---

<b>Application</b>	FC, IF, WB, E
<b>Primary Accession</b>	<a href="#">P18510</a>
<b>Reactivity</b>	Human, Mouse
<b>Host</b>	Rabbit
<b>Clonality</b>	Polyclonal
<b>Isotype</b>	Rabbit IgG
<b>Calculated MW</b>	20055
<b>Antigen Region</b>	147-177

## Additional Information

---

<b>Gene ID</b>	3557
<b>Other Names</b>	Interleukin-1 receptor antagonist protein, IL-1RN, IL-1ra, IRAP, ICIL-1RA, IL1 inhibitor, Anakinra, IL1RN, IL1F3, IL1RA
<b>Target/Specificity</b>	This IL1RN antibody is generated from rabbits immunized with a KLH conjugated synthetic peptide between 147-177 amino acids from the C-terminal region of human IL1RN.
<b>Dilution</b>	FC~~1:10~50 IF~~1:10~50 WB~~1:1000 E~~Use at an assay dependent concentration.
<b>Format</b>	Purified polyclonal antibody supplied in PBS with 0.09% (W/V) sodium azide. This antibody is prepared by Saturated Ammonium Sulfate (SAS) precipitation followed by dialysis against PBS.
<b>Storage</b>	Maintain refrigerated at 2-8°C for up to 2 weeks. For long term storage store at -20°C in small aliquots to prevent freeze-thaw cycles.
<b>Precautions</b>	IL1RN Antibody (C-term) is for research use only and not for use in diagnostic or therapeutic procedures.

## Protein Information

---

<b>Name</b>	IL1RN
<b>Synonyms</b>	IL1F3, IL1RA
<b>Function</b>	Anti-inflammatory antagonist of interleukin-1 family of proinflammatory cytokines such as interleukin-1beta/IL1B and interleukin-1alpha/IL1A.

Protects from immune dysregulation and uncontrolled systemic inflammation triggered by IL1 for a range of innate stimulatory agents such as pathogens.

**Cellular Location**

[Isoform 1]: Secreted [Isoform 3]: Cytoplasm.

**Tissue Location**

The intracellular form of IL1RN is predominantly expressed in epithelial cells

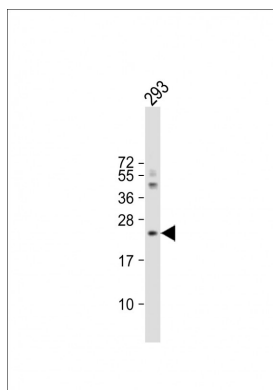
## Background

The protein is a member of the interleukin 1 cytokine family. This protein inhibits the activities of interleukin 1, alpha (IL1A) and interleukin 1, beta (IL1B), and modulates a variety of interleukin 1 related immune and inflammatory responses. A polymorphism of its gene is reported to be associated with increased risk of osteoporotic fractures and gastric cancer.

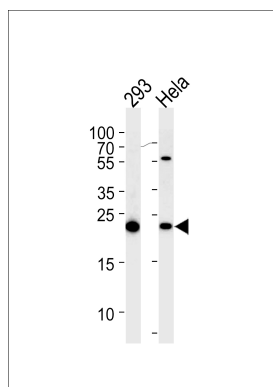
## References

Kumar,S., Biochem. Biophys. Res. Commun. 387 (3), 456-460 (2009) Rechcinski,T., Kardiol Pol 67 (6), 601-610 (2009)

## Images

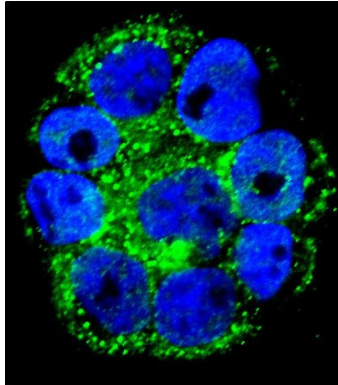
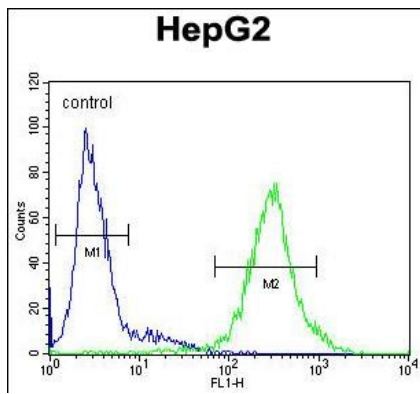


Anti-IL1RN Antibody (C-term) at 1:4000 dilution + 293 whole cell lysates Lysates/proteins at 20 µg per lane. Secondary Goat Anti-Rabbit IgG, (H+L), Peroxidase conjugated at 1/10000 dilution. Predicted band size : 20 kDa Blocking/Dilution buffer: 5% NFDM/TBST.



IL1RN Antibody (C-term) (Cat. #AP6503b) western blot analysis in 293,HeLa cell line lysates (35ug/lane).This demonstrates the IL1RN antibody detected the IL1RN protein (arrow).

IL1RN Antibody (C-term) (Cat. #AP6503b) flow cytometric analysis of HepG2 cells (right histogram) compared to a negative control cell (left histogram).FITC-conjugated goat-anti-rabbit secondary antibodies were used for the analysis.



Confocal immunofluorescent analysis of IL1RN Antibody (C-term)(Cat#AP6503b) with WiDr cell followed by Alexa Fluor 488-conjugated goat anti-rabbit IgG (green). DAPI was used to stain the cell nuclear (blue).

Please note: All products are 'FOR RESEARCH USE ONLY. NOT FOR USE IN DIAGNOSTIC OR THERAPEUTIC PROCEDURES'.