

# DPP8 Antibody (C-term)

Purified Rabbit Polyclonal Antibody (Pab)

Catalog # AP6506b

## Product Information

---

<b>Application</b>	WB, IHC-P, FC, E
<b>Primary Accession</b>	<a href="#">Q6V1X1</a>
<b>Other Accession</b>	<a href="#">Q80YA7</a>
<b>Reactivity</b>	Human
<b>Predicted</b>	Mouse
<b>Host</b>	Rabbit
<b>Clonality</b>	Polyclonal
<b>Isotype</b>	Rabbit IgG
<b>Clone Names</b>	RB19258
<b>Calculated MW</b>	103358
<b>Antigen Region</b>	846-876

## Additional Information

---

<b>Gene ID</b>	54878
<b>Other Names</b>	Dipeptidyl peptidase 8, DP8, Dipeptidyl peptidase IV-related protein 1, DPRP-1, Dipeptidyl peptidase VIII, DPP VIII, Prolyl dipeptidase DPP8, DPP8, DPRP1
<b>Target/Specificity</b>	This DPP8 antibody is generated from rabbits immunized with a KLH conjugated synthetic peptide between 846-876 amino acids from the C-terminal region of human DPP8.
<b>Dilution</b>	WB~~1:1000 IHC-P~~1:100~500 FC~~1:10~50 E~~Use at an assay dependent concentration.
<b>Format</b>	Purified polyclonal antibody supplied in PBS with 0.09% (W/V) sodium azide. This antibody is prepared by Saturated Ammonium Sulfate (SAS) precipitation followed by dialysis against PBS.
<b>Storage</b>	Maintain refrigerated at 2-8°C for up to 2 weeks. For long term storage store at -20°C in small aliquots to prevent freeze-thaw cycles.
<b>Precautions</b>	DPP8 Antibody (C-term) is for research use only and not for use in diagnostic or therapeutic procedures.

## Protein Information

---

<b>Name</b>	DPP8 {ECO:0000303 PubMed:11012666, ECO:0000312 HGNC:HGNC:16490}
-------------	---

<b>Function</b>	Dipeptidyl peptidase that cleaves off N-terminal dipeptides from proteins having a Pro or Ala residue at position 2 (PubMed: <a href="#">11012666</a> , PubMed: <a href="#">12534281</a> , PubMed: <a href="#">12662155</a> , PubMed: <a href="#">15039077</a> , PubMed: <a href="#">15664838</a> , PubMed: <a href="#">20536396</a> , PubMed: <a href="#">29382749</a> ). Acts as a key inhibitor of caspase-1-dependent monocyte and macrophage pyroptosis in resting cells by preventing activation of NLRP1 and CARD8 (PubMed: <a href="#">27820798</a> , PubMed: <a href="#">29967349</a> , PubMed: <a href="#">32796818</a> ). Sequesters the cleaved C-terminal part of NLRP1 and CARD8, which respectively constitute the active part of the NLRP1 and CARD8 inflammasomes, in a ternary complex, thereby preventing their oligomerization and activation (PubMed: <a href="#">33731929</a> , PubMed: <a href="#">33731932</a> , PubMed: <a href="#">34019797</a> ). The dipeptidyl peptidase activity is required to suppress NLRP1 and CARD8; however, neither NLRP1 nor CARD8 are bona fide substrates of DPP8, suggesting the existence of substrate(s) required for NLRP1 and CARD8 inhibition (By similarity).
<b>Cellular Location</b>	Cytoplasm
<b>Tissue Location</b>	Ubiquitously expressed, with highest levels in testis, placenta, prostate, muscle and brain

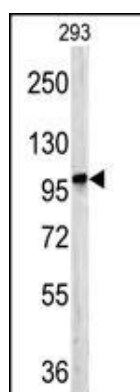
## Background

DPP8 is a member of the peptidase S9B family, a small family of dipeptidyl peptidases that are able to cleave peptide substrates at a prolyl bond. The protein shares similarity with dipeptidyl peptidase IV in that it is ubiquitously expressed, and hydrolyzes the same substrates. These similarities suggest that, like dipeptidyl peptidase IV, this protein may play a role in T-cell activation and immune function.

## References

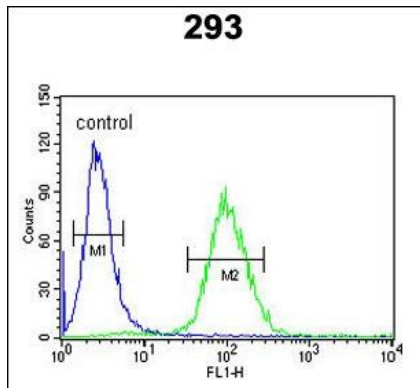
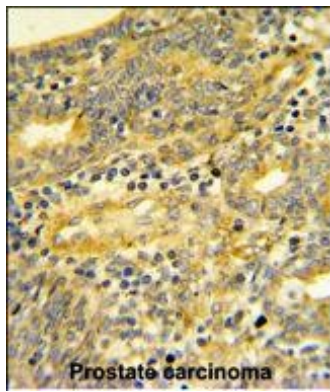
Ajami,K., FEBS Lett. 582 (5), 819-825 (2008)  
Lee,H.J., J. Biol. Chem. 281 (50), 38653-38662 (2006)

## Images



Western blot analysis of DPP8 antibody (C-term) (Cat.# AP6506b) in 293 cell line lysates (35ug/lane). DPP8 (arrow) was detected using the purified Pab.

DPP8 Antibody (C-term) (Cat.# AP6506b) IHC analysis in formalin fixed and paraffin embedded human Prostate carcinoma followed by peroxidase conjugation of the secondary antibody and DAB staining. This data demonstrates the use of the DPP8 Antibody (C-term) for immunohistochemistry. Clinical relevance has not been evaluated.



DPP8 Antibody (C-term) (Cat. #AP6506b) flow cytometric analysis of 293 cells (right histogram) compared to a negative control cell (left histogram). FITC-conjugated goat-anti-rabbit secondary antibodies were used for the analysis.

Please note: All products are 'FOR RESEARCH USE ONLY. NOT FOR USE IN DIAGNOSTIC OR THERAPEUTIC PROCEDURES'.