

EDNRA Antibody (Center)

Purified Rabbit Polyclonal Antibody (Pab)

Catalog # AP6507C

Product Information

Application	WB, IF, FC, E
Primary Accession	P25101
Other Accession	P26684 , Q61614
Reactivity	Human
Predicted	Mouse, Rat
Host	Rabbit
Clonality	Polyclonal
Isotype	Rabbit IgG
Clone Names	RB19282
Calculated MW	48722
Antigen Region	125-154

Additional Information

Gene ID	1909
Other Names	Endothelin-1 receptor, Endothelin A receptor, ET-A, ETA-R, hET-AR, EDNRA, ETA, ETRA
Target/Specificity	This EDNRA antibody is generated from rabbits immunized with a KLH conjugated synthetic peptide between 125-154 amino acids from the Central region of human EDNRA.
Dilution	WB~~1:1000 IF~~1:10~50 FC~~1:10~50 E~~Use at an assay dependent concentration.
Format	Purified polyclonal antibody supplied in PBS with 0.09% (W/V) sodium azide. This antibody is prepared by Saturated Ammonium Sulfate (SAS) precipitation followed by dialysis against PBS.
Storage	Maintain refrigerated at 2-8°C for up to 2 weeks. For long term storage store at -20°C in small aliquots to prevent freeze-thaw cycles.
Precautions	EDNRA Antibody (Center) is for research use only and not for use in diagnostic or therapeutic procedures.

Protein Information

Name	EDNRA (HGNC:3179)
Synonyms	ETA, ETRA

Function	Receptor for endothelin-1. Mediates its action by association with G proteins that activate a phosphatidylinositol-calcium second messenger system. The rank order of binding affinities for ET-A is: ET1 > ET2 >> ET3.
Cellular Location	Cell membrane; Multi-pass membrane protein.
Tissue Location	Isoform 1, isoform 3 and isoform 4 are expressed in a variety of tissues, with highest levels in the aorta and cerebellum, followed by lung, atrium and cerebral cortex, lower levels in the placenta, kidney, adrenal gland, duodenum, colon, ventricle and liver but no expression in umbilical vein endothelial cells. Within the placenta, isoform 1, isoform 2, isoform 3 and isoform 4 are expressed in the villi and stem villi vessels.

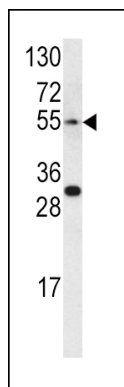
Background

EDNRA is a receptor for endothelin-1. Mediates its action by association with G proteins that activate a phosphatidylinositol-calcium second messenger system.

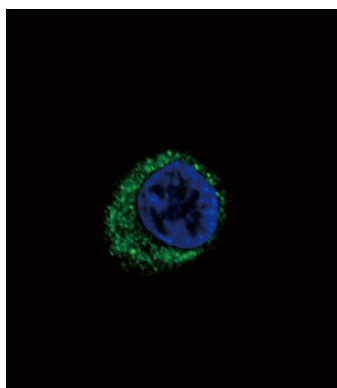
References

Cardillo,C., Arthritis Rheum. 60 (6), 1840-1844 (2009) Hayzer,D.J., Am. J. Med. Sci. 304 (4), 231-238 (1992)

Images

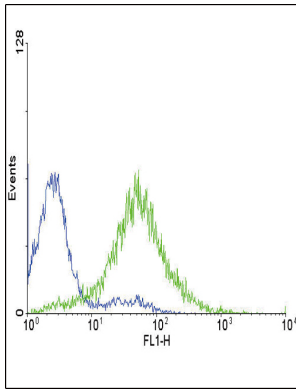


Western blot analysis of EDNRA antibody (Center) (Cat.# AP6507c) in CEM cell line lysates (35ug/lane). EDNRA (arrow) was detected using the purified Pab.



Confocal immunofluorescent analysis of EDNRA Antibody (Center)(Cat#AP6507c) with HepG2 cell followed by Alexa Fluor 488-conjugated goat anti-rabbit IgG (green). DAPI was used to stain the cell nuclear (blue).

Flow cytometric analysis of CEM cells using EDNRA Antibody (Center) (green histogram) compared to a negative control cell (blue histogram). FITC-conjugated goat-anti-rabbit secondary antibodies were used for the analysis.



Please note: All products are 'FOR RESEARCH USE ONLY. NOT FOR USE IN DIAGNOSTIC OR THERAPEUTIC PROCEDURES'.