

# CEA Antibody (Center)

Purified Rabbit Polyclonal Antibody (Pab)

Catalog # AP6513c

## Product Information

---

<b>Application</b>	WB, FC, IHC-P-Leica, E
<b>Primary Accession</b>	<a href="#">P06731</a>
<b>Reactivity</b>	Human
<b>Host</b>	Rabbit
<b>Clonality</b>	Polyclonal
<b>Isotype</b>	Rabbit IgG
<b>Clone Names</b>	RB19418
<b>Calculated MW</b>	76796
<b>Antigen Region</b>	400-429

## Additional Information

---

<b>Gene ID</b>	1048
<b>Other Names</b>	Carcinoembryonic antigen-related cell adhesion molecule 5, Carcinoembryonic antigen, CEA, Meconium antigen 100, CD66e, CEACAM5, CEA
<b>Target/Specificity</b>	This CEA antibody is generated from rabbits immunized with a KLH conjugated synthetic peptide between 400-429 amino acids from the Central region of human CEA.
<b>Dilution</b>	WB~~1:1000 FC~~1:10~50 IHC-P-Leica~~1:500 E~~Use at an assay dependent concentration.
<b>Format</b>	Purified polyclonal antibody supplied in PBS with 0.09% (W/V) sodium azide. This antibody is purified through a protein A column, followed by peptide affinity purification.
<b>Storage</b>	Maintain refrigerated at 2-8°C for up to 2 weeks. For long term storage store at -20°C in small aliquots to prevent freeze-thaw cycles.
<b>Precautions</b>	CEA Antibody (Center) is for research use only and not for use in diagnostic or therapeutic procedures.

## Protein Information

---

<b>Name</b>	CEACAM5 ( <a href="#">HGNC:1817</a> )
<b>Function</b>	Cell surface glycoprotein that plays a role in cell adhesion, intracellular signaling and tumor progression (PubMed: <a href="#">10864933</a> , PubMed: <a href="#">10910050</a> ,

PubMed:[2803308](#)). Mediates homophilic and heterophilic cell adhesion with other carcinoembryonic antigen-related cell adhesion molecules, such as CEACAM6 (PubMed:[2803308](#)). Plays a role as an oncogene by promoting tumor progression; induces resistance to anoikis of colorectal carcinoma cells (PubMed:[10910050](#)).

#### Cellular Location

Cell membrane; Lipid-anchor, GPI-anchor. Apical cell membrane. Cell surface  
Note=Localized to the apical glycocalyx surface

#### Tissue Location

Expressed in columnar epithelial and goblet cells of the colon (at protein level) (PubMed:10436421). Found in adenocarcinomas of endodermally derived digestive system epithelium and fetal colon.

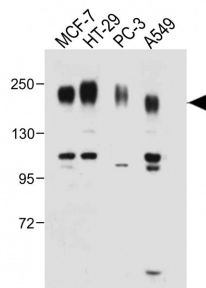
## Background

CEA is a cell surface glycoprotein that plays a role in cell adhesion and in intracellular signaling. It is a receptor for E.coli Dr adhesins.

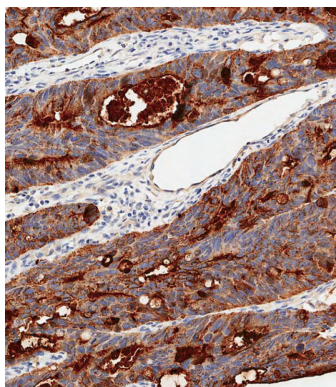
## References

Lagoudianakis,E.E., J. Surg. Res. 155 (2), 183-190 (2009)  
Gambichler,T., Am. J. Clin. Pathol. 131 (6), 782-787 (2009)

## Images



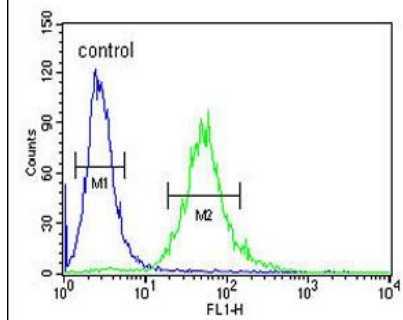
All lanes : Anti-CEA Antibody (Center) at 1:1000 dilution  
Lane 1: MCF-7 whole cell lysate Lane 2: HT-29 whole cell lysate Lane 3: PC-3 whole cell lysate Lane 4: A549 whole cell lysate Lysates/proteins at 20 µg per lane. Secondary Goat Anti-Rabbit IgG, (H+L), Peroxidase conjugated at 1/10000 dilution. Predicted band size : 77 kDa  
Blocking/Dilution buffer: 5% NFDm/TBST.



Immunohistochemical analysis of paraffin-embedded Human colon carcinoma tissue using AP6513C performed on the Leica® BOND RXm. Tissue was fixed with formaldehyde at room temperature, antigen retrieval was by heat mediation with a EDTA buffer (pH9. 0). Samples were incubated with primary antibody(1:500) for 1 hours at room temperature. A undiluted biotinylated CRF Anti-Polyvalent HRP Polymer antibody was used as the secondary antibody.

CEA Antibody (Center) (Cat. #AP6513c) flow cytometric analysis of 293 cells (right histogram) compared to a negative control cell (left histogram).FITC-conjugated goat-anti-rabbit secondary antibodies were used for the analysis.

**293**



Please note: All products are 'FOR RESEARCH USE ONLY. NOT FOR USE IN DIAGNOSTIC OR THERAPEUTIC PROCEDURES'.