

EEF1D Antibody (N-term)

Purified Rabbit Polyclonal Antibody (Pab)

Catalog # AP6523a

Product Information

Application	WB, IHC-P, FC, E
Primary Accession	P29692
Other Accession	Q68FR9 , P57776 , Q4R3D4
Reactivity	Human
Predicted	Monkey, Mouse, Rat
Host	Rabbit
Clonality	Polyclonal
Isotype	Rabbit IgG
Clone Names	RB19609
Calculated MW	31122
Antigen Region	1-30

Additional Information

Gene ID	1936
Other Names	Elongation factor 1-delta, EF-1-delta, Antigen NY-CO-4, EEF1D, EF1D
Target/Specificity	This EEF1D antibody is generated from rabbits immunized with a KLH conjugated synthetic peptide between 1-30 amino acids from the N-terminal region of human EEF1D.
Dilution	WB~~1:1000 IHC-P~~1:100~500 FC~~1:10~50 E~~Use at an assay dependent concentration.
Format	Purified polyclonal antibody supplied in PBS with 0.09% (W/V) sodium azide. This antibody is prepared by Saturated Ammonium Sulfate (SAS) precipitation followed by dialysis against PBS.
Storage	Maintain refrigerated at 2-8°C for up to 2 weeks. For long term storage store at -20°C in small aliquots to prevent freeze-thaw cycles.
Precautions	EEF1D Antibody (N-term) is for research use only and not for use in diagnostic or therapeutic procedures.

Protein Information

Name	EEF1D
Synonyms	EF1D

Function	[Isoform 1]: EF-1-beta and EF-1-delta stimulate the exchange of GDP bound to EF-1-alpha to GTP, regenerating EF-1-alpha for another round of transfer of aminoacyl-tRNAs to the ribosome.
Cellular Location	[Isoform 2]: Nucleus
Tissue Location	Isoform 2 is specifically expressed in brain, cerebellum and testis

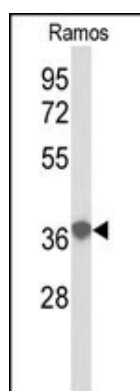
Background

EEF1D is a subunit of the elongation factor-1 complex, which is responsible for the enzymatic delivery of aminoacyl tRNAs to the ribosome. This subunit functions as guanine nucleotide exchange factor. It is reported that this subunit interacts with HIV-1 Tat, and thus it represses the translation of host-cell, but not HIV-1, mRNAs.

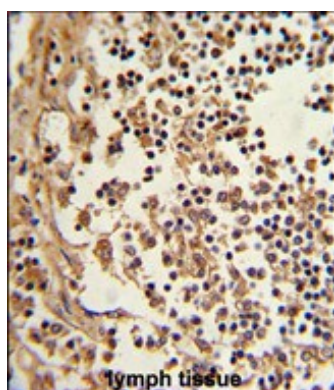
References

Yang,S., BMC Cancer 7, 211 (2007)
 Mulner-Lorillon,O., J. Biol. Chem. 269 (31), 20201-20207 (1994)

Images

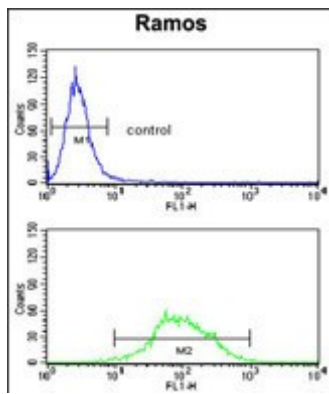


Western blot analysis of EEF1D antibody (N-term) (Cat.# AP6523a) in Ramos cell line lysates (35ug/lane). EEF1D (arrow) was detected using the purified Pab.



Formalin-fixed and paraffin-embedded human lymph reacted with EEF1D Antibody (N-term), which was peroxidase-conjugated to the secondary antibody, followed by DAB staining. This data demonstrates the use of this antibody for immunohistochemistry; clinical relevance has not been evaluated.

EEF1D Antibody (N-term) (Cat. #AP6523a) flow cytometry analysis of Ramos cells (bottom histogram) compared to a negative control cell (top histogram). FITC-conjugated goat-anti-rabbit secondary antibodies were used for the analysis.



Please note: All products are 'FOR RESEARCH USE ONLY. NOT FOR USE IN DIAGNOSTIC OR THERAPEUTIC PROCEDURES'.