

EPN3 Antibody (N-term)

Purified Rabbit Polyclonal Antibody (Pab)

Catalog # AP6527a

Product Information

Application	IHC-P, FC, WB, E
Primary Accession	Q9H201
Other Accession	Q4V882 , Q91W69
Reactivity	Human, Rat, Mouse
Predicted	Mouse, Rat
Host	Rabbit
Clonality	Polyclonal
Isotype	Rabbit IgG
Calculated MW	68222
Antigen Region	126-153

Additional Information

Gene ID	55040
Other Names	Epsin-3, EPS-15-interacting protein 3, EPN3
Target/Specificity	This EPN3 antibody is generated from rabbits immunized with a KLH conjugated synthetic peptide between 126-153 amino acids from the N-terminal region of human EPN3.
Dilution	IHC-P~~1:100~500 FC~~1:10~50 WB~~1:1000 E~~Use at an assay dependent concentration.
Format	Purified polyclonal antibody supplied in PBS with 0.09% (W/V) sodium azide. This antibody is prepared by Saturated Ammonium Sulfate (SAS) precipitation followed by dialysis against PBS.
Storage	Maintain refrigerated at 2-8°C for up to 2 weeks. For long term storage store at -20°C in small aliquots to prevent freeze-thaw cycles.
Precautions	EPN3 Antibody (N-term) is for research use only and not for use in diagnostic or therapeutic procedures.

Protein Information

Name	EPN3
Cellular Location	Cytoplasm. Cytoplasm, perinuclear region Cytoplasmic vesicle, clathrin-coated vesicle. Nucleus Note=Concentrated in the perinuclear region and associated with clathrin-coated vesicles close to the cell periphery. May shuttle to the

nucleus

Tissue Location

Detected in migrating keratinocytes from wounded skin, but not in differentiating keratinocytes or in normal skin. Detected in chronic wounds, basal cell carcinoma and ulcerative colitis.

Background

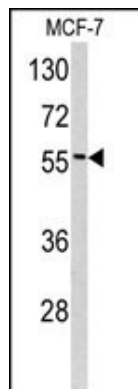
EPN3 belongs to the epsin family.

References

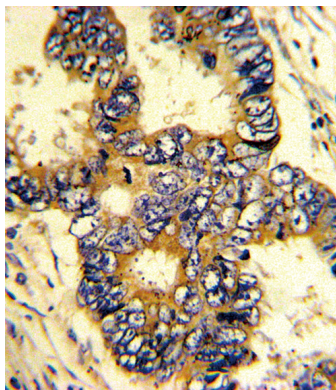
Spradling, K.D., J. Biol. Chem. 276 (31), 29257-29267 (2001)

Spradling, K.D., J. Invest. Dermatol. 115 (2), 332 (2000)

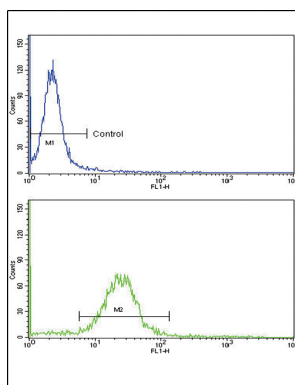
Images



EPN3 Antibody (N-term) (Cat. #AP6527a) western blot analysis in K562 cell line lysates (35ug/lane). This demonstrates the EPN3 antibody detected the EPN3 protein (arrow).



Formalin-fixed and paraffin-embedded human colon carcinoma with EPN3 Antibody (N-term), which was peroxidase-conjugated to the secondary antibody, followed by DAB staining. This data demonstrates the use of this antibody for immunohistochemistry; clinical relevance has not been evaluated.



Flow cytometric analysis of MDA-231 cells using EPN3 Antibody (N-term) (bottom histogram) compared to a negative control cell (top histogram). FITC-conjugated goat-anti-rabbit secondary antibodies were used for the analysis.

Please note: All products are 'FOR RESEARCH USE ONLY. NOT FOR USE IN DIAGNOSTIC OR THERAPEUTIC PROCEDURES'.