

ANGPTL7 Antibody (N-term)

Purified Rabbit Polyclonal Antibody (Pab)

Catalog # AP6535a

Product Information

Application	WB, E
Primary Accession	O43827
Reactivity	Human
Host	Rabbit
Clonality	Polyclonal
Isotype	Rabbit IgG
Clone Names	RB18268
Calculated MW	40018
Antigen Region	74-104

Additional Information

Gene ID	10218
Other Names	Angiopoietin-related protein 7, Angiopoietin-like factor, Angiopoietin-like protein 7, Cornea-derived transcript 6 protein, ANGPTL7, CDT6
Target/Specificity	This ANGPTL7 antibody is generated from rabbits immunized with a KLH conjugated synthetic peptide between 74-104 amino acids from the N-terminal region of human ANGPTL7.
Dilution	WB~~1:1000 E~~Use at an assay dependent concentration.
Format	Purified polyclonal antibody supplied in PBS with 0.09% (W/V) sodium azide. This antibody is prepared by Saturated Ammonium Sulfate (SAS) precipitation followed by dialysis against PBS.
Storage	Maintain refrigerated at 2-8°C for up to 2 weeks. For long term storage store at -20°C in small aliquots to prevent freeze-thaw cycles.
Precautions	ANGPTL7 Antibody (N-term) is for research use only and not for use in diagnostic or therapeutic procedures.

Protein Information

Name	ANGPTL7
Synonyms	CDT6
Function	Has a role in the formation and organization of the extracellular matrix. In the eye, it functions as a mediator of dexamethasone-induced matrix

deposition in the trabecular meshwork, the tissue responsible for the outflow of the ocular aqueous humor and for the maintenance of intraocular pressure (PubMed:[21199193](#)). Is a negative regulator of angiogenesis in the cornea, and plays a major role in maintaining corneal avascularity and transparency (PubMed:[25622036](#)).

Cellular Location

Secreted.

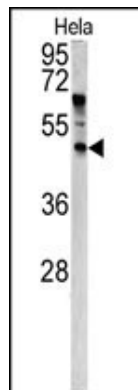
Tissue Location

Highly expressed in the cornea (at protein level) (PubMed:11682471). Expression is restricted to the stromal layer (PubMed:11682471). Also detected at the junction between the corneal stromal layer and the conjunctiva. Not detected in the sclera (PubMed:11682471).

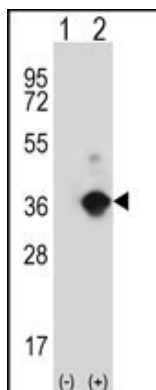
References

Kuchtey,J., Invest. Ophthalmol. Vis. Sci. 49 (8), 3438-3448 (2008)

Images



Western blot analysis of ANGPTL7 antibody (N-term) (Cat.# AP6535a) in HeLa cell line lysates (35ug/lane). ANGPTL7 (arrow) was detected using the purified Pab.



Western blot analysis of ANGPTL7 (arrow) using rabbit polyclonal ANGPTL7 Antibody (N-term) (Cat.# AP6535a). 293 cell lysates (2 ug/lane) either nontransfected (Lane 1) or transiently transfected (Lane 2) with the ANGPTL7 gene.

Please note: All products are 'FOR RESEARCH USE ONLY. NOT FOR USE IN DIAGNOSTIC OR THERAPEUTIC PROCEDURES'.