

IGJ Antibody (N-term)

Purified Rabbit Polyclonal Antibody (Pab)

Catalog # AP6548A

Product Information

Application	WB, IHC-P, FC, E
Primary Accession	P01591
Reactivity	Human
Host	Rabbit
Clonality	Polyclonal
Isotype	Rabbit IgG
Clone Names	RB18277
Calculated MW	18099
Antigen Region	32-61

Additional Information

Gene ID	3512
Other Names	Immunoglobulin J chain, IGJ, IGCJ
Target/Specificity	This IGJ antibody is generated from rabbits immunized with a KLH conjugated synthetic peptide between 32-61 amino acids from the N-terminal region of human IGJ.
Dilution	WB~~1:1000 IHC-P~~1:100~500 FC~~1:10~50 E~~Use at an assay dependent concentration.
Format	Purified polyclonal antibody supplied in PBS with 0.05% (V/V) Proclin 300. This antibody is purified through a protein A column, followed by peptide affinity purification.
Storage	Maintain refrigerated at 2-8°C for up to 2 weeks. For long term storage store at -20°C in small aliquots to prevent freeze-thaw cycles.
Precautions	IGJ Antibody (N-term) is for research use only and not for use in diagnostic or therapeutic procedures.

Protein Information

Name	JCHAIN (HGNC:5713)
Synonyms	IGCJ, IGJ
Function	Serves to link two monomer units of either IgM or IgA. In the case of IgM, the J chain-joined dimer is a nucleating unit for the IgM pentamer, and in the

case of IgA it induces dimers and/or larger polymers. It also helps to bind these immunoglobulins to secretory component.

Cellular Location

Secreted {ECO:0000250|UniProtKB:P01592}.

Background

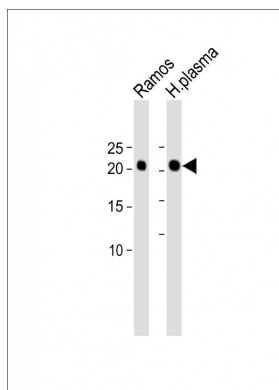
IGJ serves to link two monomer units of either IgM or IgA. In the case of IgM, the J chain-jointed dimer is a nucleating unit for the IgM pentamer, and in the case of IgA it induces larger polymers. It also help to bind these immunoglobulins to secretory component.

References

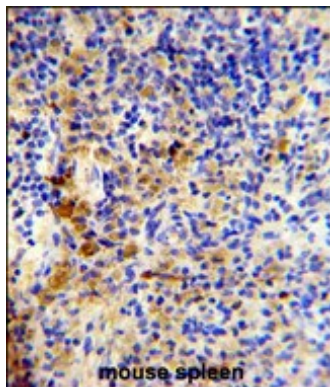
Ramachandran,P., J. Proteome Res. 5 (6), 1493-1503 (2006)

Liu,T., J. Proteome Res. 4 (6), 2070-2080 (2005)

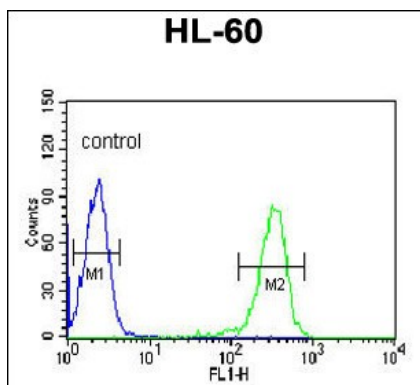
Images



All lanes: Anti-IGJ Antibody (N-term) at 1:2000 dilution
Lane 1: Ramos whole cell lysate Lane 2: Human plasma lysate
Lysates/proteins at 20 µg per lane. Secondary: Goat Anti-Rabbit IgG, (H+L), Peroxidase conjugated (ASP1615) at 1/15000 dilution. Observed band size: 22 KDa
Blocking/Dilution buffer: 5% NFDM/TBST.



Formalin-fixed and paraffin-embedded mouse spleen reacted with IGJ Antibody (N-term), which was peroxidase-conjugated to the secondary antibody, followed by DAB staining. This data demonstrates the use of this antibody for immunohistochemistry; clinical relevance has not been evaluated.



IGJ Antibody (N-term) (Cat. #AP6548a) flow cytometric analysis of HL-60 cells (right histogram) compared to a negative control cell (left histogram). FITC-conjugated goat-anti-rabbit secondary antibodies were used for the analysis.

Please note: All products are 'FOR RESEARCH USE ONLY. NOT FOR USE IN DIAGNOSTIC OR THERAPEUTIC PROCEDURES'.