

CASA Antibody (Center)

Purified Rabbit Polyclonal Antibody (Pab)

Catalog # AP6551c

Product Information

Application	WB, IHC-P, FC, E
Primary Accession	P47710
Reactivity	Human
Host	Rabbit
Clonality	Polyclonal
Isotype	Rabbit IgG
Calculated MW	21671
Antigen Region	42-70

Additional Information

Gene ID	1446
Other Names	Alpha-S1-casein, Casoxin-D, CSN1S1, CASA, CSN1
Target/Specificity	This CASA antibody is generated from rabbits immunized with a KLH conjugated synthetic peptide between 42-70 amino acids from the Central region of human CASA.
Dilution	WB~~1:1000 IHC-P~~1:100~500 FC~~1:10~50 E~~Use at an assay dependent concentration.
Format	Purified polyclonal antibody supplied in PBS with 0.09% (W/V) sodium azide. This antibody is prepared by Saturated Ammonium Sulfate (SAS) precipitation followed by dialysis against PBS.
Storage	Maintain refrigerated at 2-8°C for up to 2 weeks. For long term storage store at -20°C in small aliquots to prevent freeze-thaw cycles.
Precautions	CASA Antibody (Center) is for research use only and not for use in diagnostic or therapeutic procedures.

Protein Information

Name	CSN1S1
Synonyms	CASA, CSN1
Function	Important role in the capacity of milk to transport calcium phosphate.
Cellular Location	Secreted.

Tissue Location

Mammary gland specific. Secreted in milk.

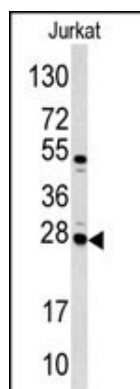
Background

CASA play an important role in the capacity of milk to transport calcium phosphate. Casoxin D acts as opioid antagonist and has vasorelaxing activity mediated by bradykinin B1 receptors.

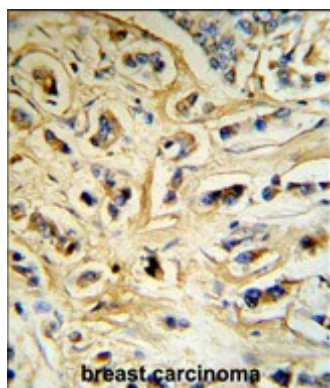
References

Xu,K., Prostate Cancer Prostatic Dis. 9 (3), 293-297 (2006)

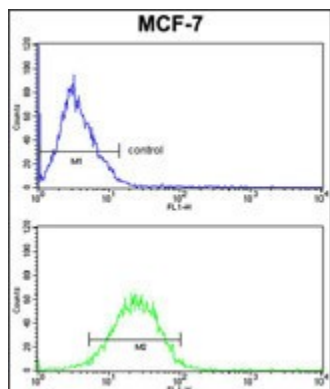
Images



Western blot analysis of CASA antibody (Center) (Cat.# AP6551c) in Jurkat cell line lysates (35ug/lane). CASA (arrow) was detected using the purified Pab.



CASA Antibody (Center) (RB18742) IHC analysis in formalin fixed and paraffin embedded human breast carcinoma tissue followed by peroxidase conjugation of the secondary antibody and DAB staining. This data demonstrates the use of the CASA Antibody (Center) for immunohistochemistry. Clinical relevance has not been evaluated.



CASA Antibody (Center)(Cat.#AP6551c) FC analysis of MCF-7 cells (bottom histogram) compared to a negative control cell (top histogram). FITC-conjugated goat-anti-rabbit secondary antibodies were used for the analysis.

Please note: All products are 'FOR RESEARCH USE ONLY. NOT FOR USE IN DIAGNOSTIC OR THERAPEUTIC PROCEDURES'.