

SPP1 Antibody (C-term)

Purified Rabbit Polyclonal Antibody (Pab)

Catalog # AP6555b

Product Information

Application	IHC-P, FC, WB, E
Primary Accession	P10451
Reactivity	Human
Host	Rabbit
Clonality	Polyclonal
Isotype	Rabbit IgG
Clone Names	RB18957
Calculated MW	35423
Antigen Region	273-301

Additional Information

Gene ID	6696
Other Names	Osteopontin, Bone sialoprotein 1, Nephropontin, Secreted phosphoprotein 1, SPP-1, Urinary stone protein, Uropontin, SPP1, BNSP, OPN
Target/Specificity	This SPP1 antibody is generated from rabbits immunized with a KLH conjugated synthetic peptide between 273-301 amino acids from the C-terminal region of human SPP1.
Dilution	IHC-P~~1:100~500 FC~~1:10~50 WB~~1:1000 E~~Use at an assay dependent concentration.
Format	Purified polyclonal antibody supplied in PBS with 0.09% (W/V) sodium azide. This antibody is prepared by Saturated Ammonium Sulfate (SAS) precipitation followed by dialysis against PBS.
Storage	Maintain refrigerated at 2-8°C for up to 2 weeks. For long term storage store at -20°C in small aliquots to prevent freeze-thaw cycles.
Precautions	SPP1 Antibody (C-term) is for research use only and not for use in diagnostic or therapeutic procedures.

Protein Information

Name	SPP1
Synonyms	BNSP, OPN
Function	Major non-collagenous bone protein that binds tightly to hydroxyapatite.

Appears to form an integral part of the mineralized matrix. Probably important to cell-matrix interaction.

Cellular Location

Secreted

Tissue Location

Detected in cerebrospinal fluid and urine (at protein level) (PubMed:25326458, PubMed:36213313, PubMed:37453717) Bone. Found in plasma.

Background

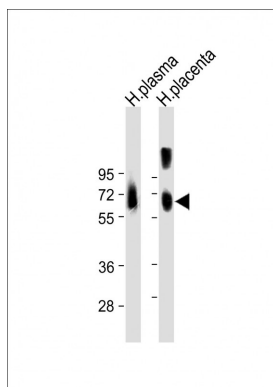
SPP1 binds tightly to hydroxyapatite. The protein appears to form an integral part of the mineralized matrix and probably important to cell-matrix interaction. It acts as a cytokine involved in enhancing production of interferon-gamma and interleukin-12 and reducing production of interleukin-10 and is essential in the pathway that leads to type I immunity.

References

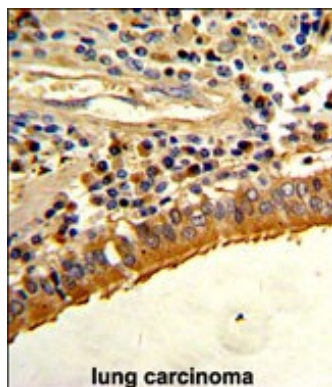
Macri,A., Tumori 95 (1), 48-52 (2009)

Agnihotri,R., J. Biol. Chem. 276 (30), 28261-28267 (2001)

Images

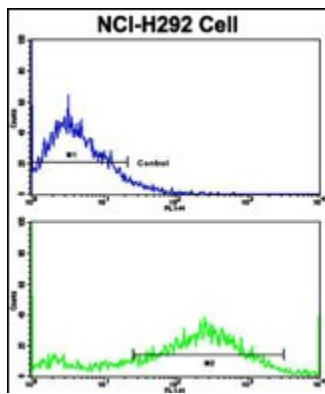


All lanes : Anti-SPP1 Antibody (C-term) at 1:2000 dilution
Lane 1: Human plasma lysate Lane 2: Human placenta lysate
Lysates/proteins at 20 µg per lane. Secondary Goat Anti-Rabbit IgG, (H+L), Peroxidase conjugated at 1/10000 dilution. Predicted band size : 35 kDa
Blocking/Dilution buffer: 5% NFDM/TBST.



Formalin-fixed and paraffin-embedded human lung carcinoma with SPP1 Antibody (C-term), which was peroxidase-conjugated to the secondary antibody, followed by DAB staining. This data demonstrates the use of this antibody for immunohistochemistry; clinical relevance has not been evaluated.

Flow cytometric analysis of NCI-H292 cells using SPP1 Antibody (C-term)(bottom histogram) compared to a negative control cell (top histogram). FITC-conjugated goat-anti-rabbit secondary antibodies were used for the analysis.



Please note: All products are 'FOR RESEARCH USE ONLY. NOT FOR USE IN DIAGNOSTIC OR THERAPEUTIC PROCEDURES'.