

PSA Antibody (Center)

Purified Rabbit Polyclonal Antibody (Pab)

Catalog # AP6563c

Product Information

Application	WB, IHC-P, FC, E
Primary Accession	P55786
Other Accession	Q11011
Reactivity	Human, Rat, Mouse
Predicted	Mouse
Host	Rabbit
Clonality	Polyclonal
Isotype	Rabbit IgG
Clone Names	RB19101
Calculated MW	103276
Antigen Region	536-565

Additional Information

Gene ID	9520
Other Names	Puromycin-sensitive aminopeptidase, PSA, Cytosol alanyl aminopeptidase, AAP-S, NPEPPS, PSA
Target/Specificity	This PSA antibody is generated from rabbits immunized with a KLH conjugated synthetic peptide between 536-565 amino acids from the Central region of human PSA.
Dilution	WB~~1:1000 IHC-P~~1:100~500 FC~~1:10~50 E~~Use at an assay dependent concentration.
Format	Purified polyclonal antibody supplied in PBS with 0.05% (V/V) Proclin 300. This antibody is prepared by Saturated Ammonium Sulfate (SAS) precipitation followed by dialysis against PBS.
Storage	Maintain refrigerated at 2-8°C for up to 2 weeks. For long term storage store at -20°C in small aliquots to prevent freeze-thaw cycles.
Precautions	PSA Antibody (Center) is for research use only and not for use in diagnostic or therapeutic procedures.

Protein Information

Name	NPEPPS
Synonyms	PSA

Function	Aminopeptidase with broad substrate specificity for several peptides. Involved in proteolytic events essential for cell growth and viability. May act as regulator of neuropeptide activity. Plays a role in the antigen-processing pathway for MHC class I molecules. Involved in the N-terminal trimming of cytotoxic T-cell epitope precursors. Digests the poly-Q peptides found in many cellular proteins. Digests tau from normal brain more efficiently than tau from Alzheimer disease brain.
Cellular Location	Cytoplasm, cytosol. Nucleus
Tissue Location	Detected in liver, epithelium of renal tubules, epithelium of small and large intestine, gastric epithelial cells, and alveoli of the lung (at protein level).

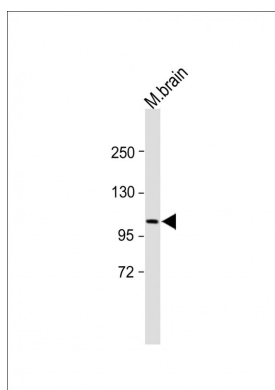
Background

PSA is the puromycin-sensitive aminopeptidase, a zinc metallopeptidase which hydrolyzes amino acids from the N-terminus of its substrate. The protein has been localized to both the cytoplasm and to cellular membranes. This enzyme degrades enkaphalins in the brain, and studies in mouse suggest that it is involved in proteolytic events regulating the cell cycle.

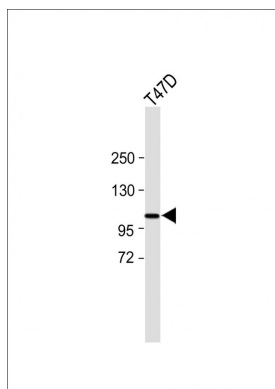
References

Thompson,M.W., Peptides 24 (9), 1359-1365 (2003)

Images

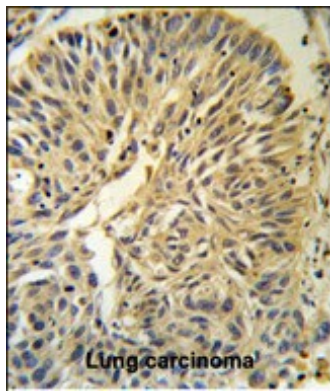


All lanes : Anti-PSA Antibody (Center) at 1:2000 dilution
Lane 1: mouse brain tissue lysate Lysates/proteins at 20 µg per lane. Secondary Goat Anti-Mouse IgG/A/M(H/L), Peroxidase conjugated at 1/2000 dilution. Observed band size : 110kDa Blocking/Dilution buffer: 5% NFDM/TBST.

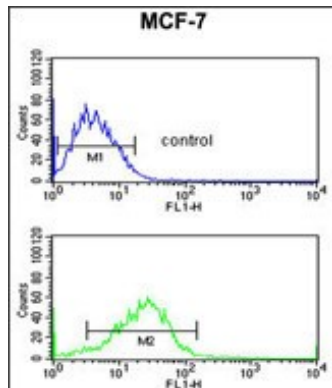


All lanes : Anti-PSA Antibody (Center) at 1:2000 dilution
Lane 1: T47D whole cell lysate Lysates/proteins at 20 µg per lane. Secondary Goat Anti-Mouse IgG/A/M(H/L), Peroxidase conjugated at 1/2000 dilution. Observed band size : 110kDa Blocking/Dilution buffer: 5% NFDM/TBST.

PSA Antibody (Center) (Cat. #AP6563c) IHC analysis in formalin fixed and paraffin embedded human Lung carcinoma followed by peroxidase conjugation of the secondary antibody and DAB staining. This data demonstrates the use of the PSA Antibody (Center) for



immunohistochemistry. Clinical relevance has not been evaluated.



PSA Antibody (Center) (Cat. #AP6563c) flow cytometric analysis of MCF-7 cells (bottom histogram) compared to a negative control cell (top histogram). FITC-conjugated goat-anti-rabbit secondary antibodies were used for the analysis.

Please note: All products are 'FOR RESEARCH USE ONLY. NOT FOR USE IN DIAGNOSTIC OR THERAPEUTIC PROCEDURES'.