

# COL6A1 Antibody (C-term)

Purified Rabbit Polyclonal Antibody (Pab)

Catalog # AP6587B

## Product Information

---

<b>Application</b>	WB, IHC-P, IF, FC, E
<b>Primary Accession</b>	<a href="#">P12109</a>
<b>Reactivity</b>	Human, Mouse
<b>Host</b>	Rabbit
<b>Clonality</b>	Polyclonal
<b>Isotype</b>	Rabbit IgG
<b>Clone Names</b>	RB19577
<b>Calculated MW</b>	108529
<b>Antigen Region</b>	831-858

## Additional Information

---

<b>Gene ID</b>	1291
<b>Other Names</b>	Collagen alpha-1(VI) chain, COL6A1
<b>Target/Specificity</b>	This COL6A1 antibody is generated from rabbits immunized with a KLH conjugated synthetic peptide between 831-858 amino acids from the C-terminal region of human COL6A1.
<b>Dilution</b>	WB~~1:1000 IHC-P~~1:100~500 IF~~1:10~50 FC~~1:10~50 E~~Use at an assay dependent concentration.
<b>Format</b>	Purified polyclonal antibody supplied in PBS with 0.09% (W/V) sodium azide. This antibody is prepared by Saturated Ammonium Sulfate (SAS) precipitation followed by dialysis against PBS.
<b>Storage</b>	Maintain refrigerated at 2-8°C for up to 2 weeks. For long term storage store at -20°C in small aliquots to prevent freeze-thaw cycles.
<b>Precautions</b>	COL6A1 Antibody (C-term) is for research use only and not for use in diagnostic or therapeutic procedures.

## Protein Information

---

<b>Name</b>	COL6A1
<b>Function</b>	Collagen VI acts as a cell-binding protein.
<b>Cellular Location</b>	Secreted, extracellular space, extracellular matrix

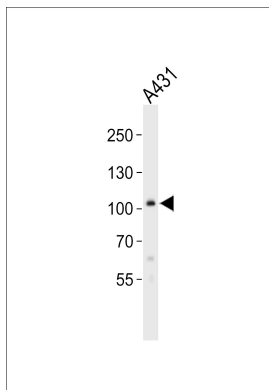
## Background

The collagens are a superfamily of proteins that play a role in maintaining the integrity of various tissues. Collagens are extracellular matrix proteins and have a triple-helical domain as their common structural element. Collagen VI is a major structural component of microfibrils. The basic structural unit of collagen VI is a heterotrimer of the alpha1(VI), alpha2(VI), and alpha3(VI) chains. The protein COL6A1 is the alpha 1 subunit of type VI collagen (alpha1(VI) chain). Mutations in the genes that code for the collagen VI subunits result in the autosomal dominant disorder, Bethlem myopathy.

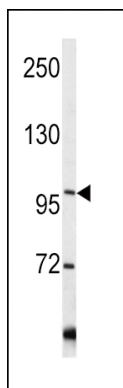
## References

Martoni,E., Hum. Mutat. 30 (5), E662-E672 (2009)  
Kim,T.H., J. Rheumatol. 35 (9), 1849-1852 (2008)  
Fujita,A., Genet. Mol. Res. 7 (2), 371-378 (2008)

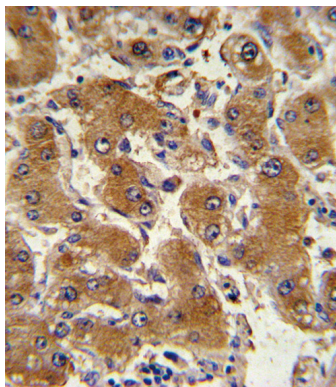
## Images



Western blot analysis of lysate from A431 cell line, using COL6A1 Antibody (C-term)(Cat. #AP6587b). AP6587b was diluted at 1:1000. A goat anti-rabbit IgG H&L(HRP) at 1:10000 dilution was used as the secondary antibody. Lysate at 20ug.

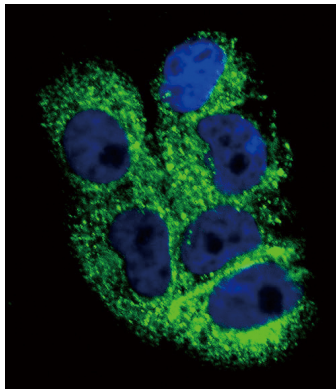


Western blot analysis of COL6A1 antibody (C-term) (Cat. #AP6587b) in Y79 cell line lysates (35ug/lane). COL6A1 (arrow) was detected using the purified Pab.

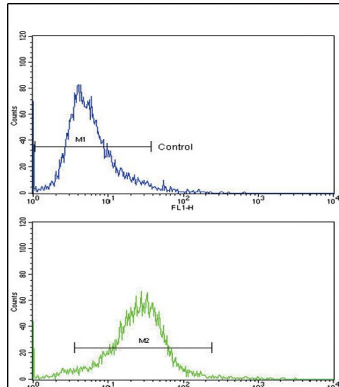


Formalin-fixed and paraffin-embedded human hepatocarcinoma with COL6A1 Antibody (C-term), which was peroxidase-conjugated to the secondary antibody, followed by DAB staining. This data demonstrates the use of this antibody for immunohistochemistry; clinical relevance has not been evaluated.

Confocal immunofluorescent analysis of COL6A1 Antibody (C-term)(Cat#AP6587b) with A2058 cell followed



by Alexa Fluor 488-conjugated goat anti-rabbit IgG (green).DAPI was used to stain the cell nuclear (blue).



Flow cytometric analysis of 293 cells using COL6A1 Antibody (C-term)(bottom histogram) compared to a negative control cell (top histogram). FITC-conjugated goat-anti-rabbit secondary antibodies were used for the analysis.

Please note: All products are 'FOR RESEARCH USE ONLY. NOT FOR USE IN DIAGNOSTIC OR THERAPEUTIC PROCEDURES'.