

KLF6 Antibody (N-term)

Purified Rabbit Polyclonal Antibody (Pab)

Catalog # AP6588d

Product Information

Application	WB, FC, E
Primary Accession	Q99612
Other Accession	O08584
Reactivity	Human
Predicted	Mouse
Host	Rabbit
Clonality	Polyclonal
Isotype	Rabbit IgG
Clone Names	RB19945
Calculated MW	31865
Antigen Region	56-82

Additional Information

Gene ID	1316
Other Names	Krueppel-like factor 6, B-cell-derived protein 1, Core promoter element-binding protein, GC-rich sites-binding factor GBF, Proto-oncogene BCD1, Suppressor of tumorigenicity 12 protein, Transcription factor Zf9, KLF6, BCD1, COPEB, CPBP, ST12
Target/Specificity	This KLF6 antibody is generated from rabbits immunized with a KLH conjugated synthetic peptide between 56-82 amino acids from the N-terminal region of human KLF6.
Dilution	WB~~1:1000 FC~~1:10~50 E~~Use at an assay dependent concentration.
Format	Purified polyclonal antibody supplied in PBS with 0.09% (W/V) sodium azide. This antibody is prepared by Saturated Ammonium Sulfate (SAS) precipitation followed by dialysis against PBS.
Storage	Maintain refrigerated at 2-8°C for up to 2 weeks. For long term storage store at -20°C in small aliquots to prevent freeze-thaw cycles.
Precautions	KLF6 Antibody (N-term) is for research use only and not for use in diagnostic or therapeutic procedures.

Protein Information

Name	KLF6
-------------	------

Synonyms	BCD1, COPEB, CPBP, ST12
Function	Transcriptional activator (By similarity). Binds a GC box motif. Could play a role in B-cell growth and development.
Cellular Location	Nucleus.
Tissue Location	Highly expressed in placenta followed by spleen, thymus, prostate, testis, small intestine and colon. Weakly expressed in pancreas, lung, liver, heart and skeletal muscle. Also expressed in fetal brain, spleen and thymus

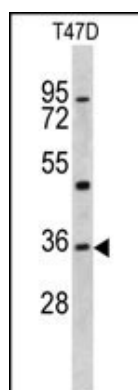
Background

COPEB is a member of the Kruppel-like family of transcription factors. The zinc finger protein is a transcriptional activator, and functions as a tumor suppressor.

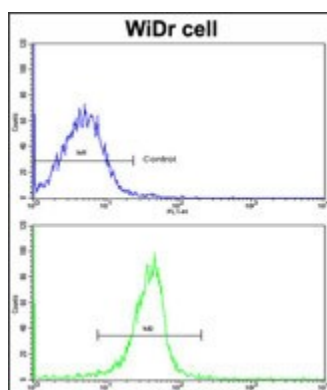
References

Sangodkar,J., Eur. J. Cancer 45 (4), 666-676 (2009)
DiFeo,A., Drug Resist. Updat. 12 (1-2), 1-7 (2009)

Images



Western blot analysis of KLF6 antibody (N-term) (Cat. #AP6588d) in T47D cell line lysates (35ug/lane). KLF6 (arrow) was detected using the purified Pab.



Flow cytometric analysis of wiDr cells using KLF6 Antibody (N-term)(bottom histogram) compared to a negative control cell (top histogram). FITC-conjugated goat-anti-rabbit secondary antibodies were used for the analysis.

Please note: All products are 'FOR RESEARCH USE ONLY. NOT FOR USE IN DIAGNOSTIC OR THERAPEUTIC PROCEDURES'.