

# DCN Antibody (Center)

Purified Rabbit Polyclonal Antibody (Pab)

Catalog # AP6590c

## Product Information

---

<b>Application</b>	WB, IHC-P, FC, E
<b>Primary Accession</b>	<a href="#">P07585</a>
<b>Other Accession</b>	<a href="#">Q9XSD9</a> , <a href="#">P21793</a>
<b>Reactivity</b>	Human, Mouse
<b>Predicted</b>	Bovine, Pig
<b>Host</b>	Rabbit
<b>Clonality</b>	Polyclonal
<b>Isotype</b>	Rabbit IgG
<b>Clone Names</b>	RB19595
<b>Calculated MW</b>	39747
<b>Antigen Region</b>	122-150

## Additional Information

---

<b>Gene ID</b>	1634
<b>Other Names</b>	Decorin, Bone proteoglycan II, PG-S2, PG40, DCN, SLRR1B
<b>Target/Specificity</b>	This DCN antibody is generated from rabbits immunized with a KLH conjugated synthetic peptide between 122-150 amino acids from the Central region of human DCN.
<b>Dilution</b>	WB~~1:1000 IHC-P~~1:100~500 FC~~1:10~50 E~~Use at an assay dependent concentration.
<b>Format</b>	Purified polyclonal antibody supplied in PBS with 0.09% (W/V) sodium azide. This antibody is prepared by Saturated Ammonium Sulfate (SAS) precipitation followed by dialysis against PBS.
<b>Storage</b>	Maintain refrigerated at 2-8°C for up to 2 weeks. For long term storage store at -20°C in small aliquots to prevent freeze-thaw cycles.
<b>Precautions</b>	DCN Antibody (Center) is for research use only and not for use in diagnostic or therapeutic procedures.

## Protein Information

---

<b>Name</b>	DCN
<b>Synonyms</b>	SLRR1B

<b>Function</b>	May affect the rate of fibrils formation.
<b>Cellular Location</b>	Secreted, extracellular space, extracellular matrix. Secreted
<b>Tissue Location</b>	Detected in placenta (at protein level) (PubMed:32337544). Detected in cerebrospinal fluid, fibroblasts and urine (at protein level) (PubMed:25326458, PubMed:36213313, PubMed:37453717).

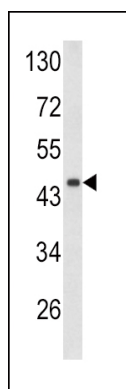
## Background

DCN is a small cellular or pericellular matrix proteoglycan that is closely related in structure to biglycan protein. The protein and biglycan are thought to be the result of a gene duplication. This protein is a component of connective tissue, binds to type I collagen fibrils, and plays a role in matrix assembly. It contains one attached glycosaminoglycan chain. This protein is capable of suppressing the growth of various tumor cell lines.

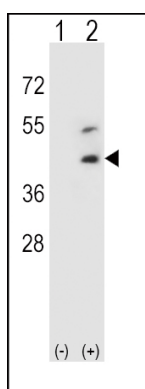
## References

Goldoni,S., J. Cell Biol. 185 (4), 743-754 (2009)

## Images

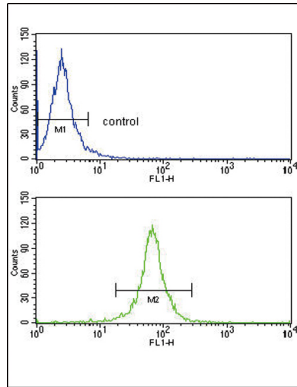
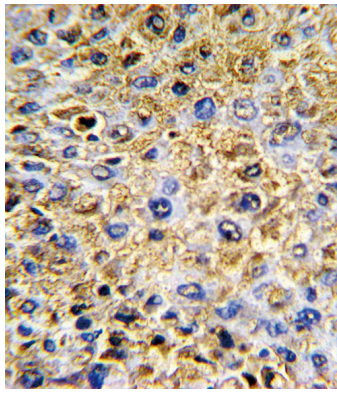


Western blot analysis of DCN antibody (Center) (Cat. #AP6590c) in mouse heart tissue lysates (35ug/lane). DCN (arrow) was detected using the purified Pab.



Western blot analysis of DCN (arrow) using rabbit polyclonal DCN Antibody (Center) (Cat. #AP6590c). 293 cell lysates (2 ug/lane) either nontransfected (Lane 1) or transiently transfected (Lane 2) with the DCN gene.

Formalin-fixed and paraffin-embedded human hepatocarcinoma with DCN Antibody (Center), which was peroxidase-conjugated to the secondary antibody, followed by DAB staining. This data demonstrates the use of this antibody for immunohistochemistry; clinical relevance has not been evaluated.



DCN Antibody (Center) (Cat.#AP6590c) flow cytometry analysis of HepG2 cells (bottom histogram) compared to a negative control cell (top histogram). FITC-conjugated goat-anti-rabbit secondary antibodies were used for the analysis.

## Citations

- [Proteomic analysis of the effect of extracellular calcium ions on human mesenchymal stem cells: implications for bone tissue engineering.](#)

Please note: All products are 'FOR RESEARCH USE ONLY. NOT FOR USE IN DIAGNOSTIC OR THERAPEUTIC PROCEDURES'.