

AZGP1 Antibody (N-term)

Purified Rabbit Polyclonal Antibody (Pab)

Catalog # AP6628a

Product Information

Application	WB, IHC-P, E
Primary Accession	P25311
Reactivity	Human
Host	Rabbit
Clonality	Polyclonal
Isotype	Rabbit IgG
Clone Names	RB18737
Calculated MW	34259
Antigen Region	5-32

Additional Information

Gene ID	563
Other Names	Zinc-alpha-2-glycoprotein, Zn-alpha-2-GP, Zn-alpha-2-glycoprotein, AZGP1, ZAG, ZNGP1
Target/Specificity	This AZGP1 antibody is generated from rabbits immunized with a KLH conjugated synthetic peptide between 5-32 amino acids from the N-terminal region of human AZGP1.
Dilution	WB~~1:1000 IHC-P~~1:100~500 E~~Use at an assay dependent concentration.
Format	Purified polyclonal antibody supplied in PBS with 0.09% (W/V) sodium azide. This antibody is prepared by Saturated Ammonium Sulfate (SAS) precipitation followed by dialysis against PBS.
Storage	Maintain refrigerated at 2-8°C for up to 2 weeks. For long term storage store at -20°C in small aliquots to prevent freeze-thaw cycles.
Precautions	AZGP1 Antibody (N-term) is for research use only and not for use in diagnostic or therapeutic procedures.

Protein Information

Name	AZGP1
Synonyms	ZAG, ZNGP1
Function	Stimulates lipid degradation in adipocytes and causes the extensive fat losses associated with some advanced cancers. May bind polyunsaturated

fatty acids.

Cellular Location

Secreted.

Tissue Location

Blood plasma, seminal plasma, urine, saliva, sweat, epithelial cells of various human glands, liver

Background

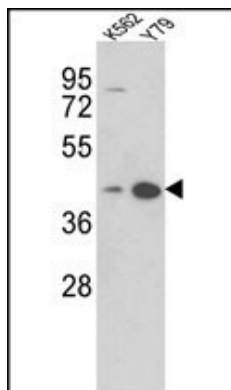
AZGP1 stimulates lipid degradation in adipocytes and causes the extensive fat losses associated with some advanced cancers. It may bind polyunsaturated fatty acids.

References

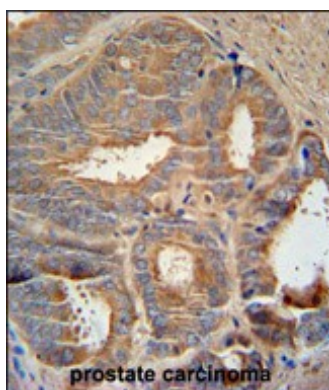
Yeung,D.C., J. Clin. Endocrinol. Metab. 94 (7), 2531-2536 (2009)

Vanni,H., Chest 135 (5), 1197-1208 (2009)

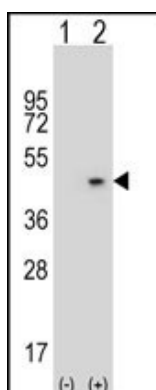
Images



Western blot analysis of AZGP1 Antibody (N-term) (Cat. #AP6628a) in K562, Y79 cell line lysates (35ug/lane). AZGP1 (arrow) was detected using the purified Pab.



AZGP1 Antibody (N-term) (Cat. #AP6628a) immunohistochemistry analysis in formalin fixed and paraffin embedded human prostate carcinoma followed by peroxidase conjugation of the secondary antibody and DAB staining. This data demonstrates the use of the AZGP1 Antibody (N-term) for immunohistochemistry. Clinical relevance has not been evaluated.



Western blot analysis of AZGP1 (arrow) using rabbit polyclonal AZGP1 Antibody (N-term) (Cat. #AP6628a). 293 cell lysates (2 ug/lane) either nontransfected (Lane 1) or transiently transfected (Lane 2) with the AZGP1 gene.

Please note: All products are 'FOR RESEARCH USE ONLY. NOT FOR USE IN DIAGNOSTIC OR THERAPEUTIC PROCEDURES'.