

# HPX Antibody (Center)

Purified Rabbit Polyclonal Antibody (Pab)

Catalog # AP6653c

## Product Information

---

<b>Application</b>	WB, IHC-P, FC, IHC-P-Leica, E
<b>Primary Accession</b>	<a href="#">P02790</a>
<b>Reactivity</b>	Human, Mouse, Rat
<b>Host</b>	Rabbit
<b>Clonality</b>	Polyclonal
<b>Isotype</b>	Rabbit IgG
<b>Calculated MW</b>	51676
<b>Antigen Region</b>	200-227

## Additional Information

---

<b>Gene ID</b>	3263
<b>Other Names</b>	Hemopexin, Beta-1B-glycoprotein, HPX
<b>Target/Specificity</b>	This HPX antibody is generated from rabbits immunized with a KLH conjugated synthetic peptide between 200-227 amino acids from the Central region of human HPX.
<b>Dilution</b>	WB~~1:1000 IHC-P~~1:100~500 FC~~1:10~50 IHC-P-Leica~~1:500 E~~Use at an assay dependent concentration.
<b>Format</b>	Purified polyclonal antibody supplied in PBS with 0.09% (W/V) sodium azide. This antibody is purified through a protein A column, followed by peptide affinity purification.
<b>Storage</b>	Maintain refrigerated at 2-8°C for up to 2 weeks. For long term storage store at -20°C in small aliquots to prevent freeze-thaw cycles.
<b>Precautions</b>	HPX Antibody (Center) is for research use only and not for use in diagnostic or therapeutic procedures.

## Protein Information

---

<b>Name</b>	HPX
<b>Function</b>	Binds heme and transports it to the liver for breakdown and iron recovery, after which the free hemopexin returns to the circulation.
<b>Cellular Location</b>	Secreted.

## Tissue Location

Expressed by the liver and secreted in plasma.

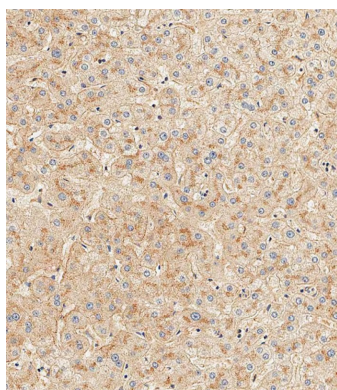
## Background

HPX is a plasma glycoprotein that binds heme with high affinity. The protein is an acute phase protein that transports heme from the plasma to the liver and may be involved in protecting cells from oxidative stress.

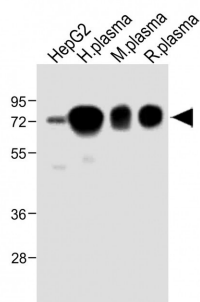
## References

Ascenzi,P., IUBMB Life 59 (11), 700-708 (2007)

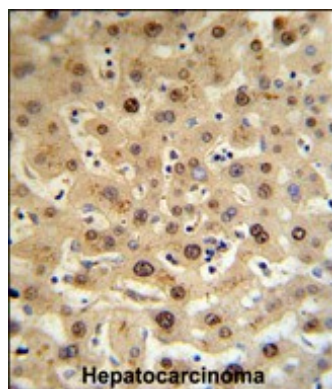
## Images



Immunohistochemical analysis of paraffin-embedded Human liver tissue using AP6653c performed on the Leica® BOND RXm. Tissue was fixed with formaldehyde at room temperature, antigen retrieval was by heat mediation with a EDTA buffer (pH9. 0). Samples were incubated with primary antibody(1:500) for 1 hours at room temperature. A undiluted biotinylated CRF Anti-Polyvalent HRP Polymer antibody was used as the secondary antibody.

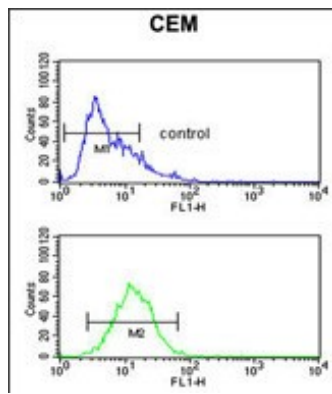


All lanes : Anti-HPX Antibody (Center) at 1:2000 dilution  
Lane 1: HepG2 whole cell lysate Lane 2: Human plasma lysate Lane 3: Mouse plasma lysate Lane 4: Rat plasma lysate Lysates/proteins at 20 µg per lane. Secondary Goat Anti-Rabbit IgG, (H+L), Peroxidase conjugated at 1/10000 dilution. Predicted band size : 52 kDa Blocking/Dilution buffer: 5% NFDM/TBST.



HPX Antibody (Center) (RB18728) IHC analysis in formalin fixed and paraffin embedded human hepatocarcinoma tissue followed by peroxidase conjugation of the secondary antibody and DAB staining. This data demonstrates the use of the HPX Antibody (Center) for immunohistochemistry. Clinical relevance has not been evaluated.

HPX Antibody (Center) (Cat. #AP6653c) flow cytometric analysis of CEM cells (bottom histogram) compared to a negative control cell (top histogram).FITC-conjugated goat-anti-rabbit secondary antibodies were used for the analysis.



Please note: All products are 'FOR RESEARCH USE ONLY. NOT FOR USE IN DIAGNOSTIC OR THERAPEUTIC PROCEDURES'.