

TROP2 Antibody (Center)

Purified Rabbit Polyclonal Antibody (Pab)

Catalog # AP6681c

Product Information

Application	WB, IHC-P, E
Primary Accession	P09758
Reactivity	Human
Host	Rabbit
Clonality	Polyclonal
Isotype	Rabbit IgG
Clone Names	RB18111
Calculated MW	35709
Antigen Region	162-190

Additional Information

Gene ID	4070
Other Names	Tumor-associated calcium signal transducer 2, Cell surface glycoprotein Trop-2, Membrane component chromosome 1 surface marker 1, Pancreatic carcinoma marker protein GA733-1, TACSTD2, GA733-1, M1S1, TROP2
Target/Specificity	This TROP2 antibody is generated from rabbits immunized with a KLH conjugated synthetic peptide between 162-190 amino acids from the Central region of human TROP2.
Dilution	WB~~1:1000 IHC-P~~1:100~500 E~~Use at an assay dependent concentration.
Format	Purified polyclonal antibody supplied in PBS with 0.09% (W/V) sodium azide. This antibody is prepared by Saturated Ammonium Sulfate (SAS) precipitation followed by dialysis against PBS.
Storage	Maintain refrigerated at 2-8°C for up to 2 weeks. For long term storage store at -20°C in small aliquots to prevent freeze-thaw cycles.
Precautions	TROP2 Antibody (Center) is for research use only and not for use in diagnostic or therapeutic procedures.

Protein Information

Name	TACSTD2
Synonyms	GA733-1, M1S1, TROP2
Function	May function as a growth factor receptor.

Cellular Location Membrane; Single-pass type I membrane protein.

Tissue Location Placenta, pancreatic carcinoma cell lines.

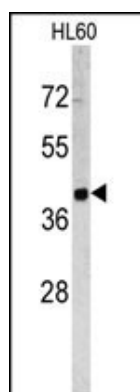
Background

TROP2 is a carcinoma-associated antigen defined by the monoclonal antibody GA733. This antigen is a member of a family including at least two type I membrane proteins. It transduces an intracellular calcium signal and acts as a cell surface receptor. Mutations of its gene result in gelatinous drop-like corneal dystrophy, an autosomal recessive disorder characterized by severe corneal amyloidosis leading to blindness.

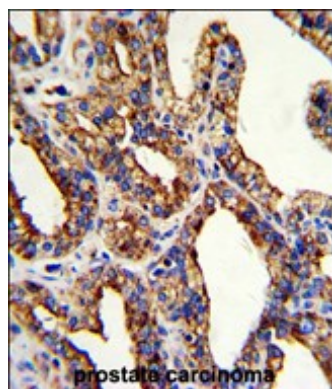
References

Goldstein,A.S., Proc. Natl. Acad. Sci. U.S.A. 105 (52), 20882-20887 (2008)

Images



Western blot analysis of TROP2 antibody (Center) (Cat. #AP6681c) in HL60 cell line lysates (35ug/lane). TROP2 (arrow) was detected using the purified Pab.



Formalin-fixed and paraffin-embedded human prostate carcinoma with TROP2 Antibody (Center), which was peroxidase-conjugated to the secondary antibody, followed by DAB staining. This data demonstrates the use of this antibody for immunohistochemistry; clinical relevance has not been evaluated.

Please note: All products are 'FOR RESEARCH USE ONLY. NOT FOR USE IN DIAGNOSTIC OR THERAPEUTIC PROCEDURES'.