

PSME2 Antibody (Center)

Affinity Purified Rabbit Polyclonal Antibody (Pab)

Catalog # AP6692c

Product Information

Application	IHC-P, FC, WB, E
Primary Accession	Q9UL46
Other Accession	Q863Z0 , P97372 , Q5E9G3
Reactivity	Human, Rat, Mouse
Predicted	Bovine, Pig
Host	Rabbit
Clonality	Polyclonal
Isotype	Rabbit IgG
Clone Names	RB20221
Calculated MW	27402
Antigen Region	61-91

Additional Information

Gene ID	5721
Other Names	Proteasome activator complex subunit 2, 11S regulator complex subunit beta, REG-beta, Activator of multicatalytic protease subunit 2, Proteasome activator 28 subunit beta, PA28b, PA28beta, PSME2
Target/Specificity	This PSME2 antibody is generated from rabbits immunized with a KLH conjugated synthetic peptide between 61-91 amino acids from the Central region of human PSME2.
Dilution	IHC-P~~1:100~500 FC~~1:10~50 WB~~1:1000 E~~Use at an assay dependent concentration.
Format	Purified polyclonal antibody supplied in PBS with 0.09% (W/V) sodium azide. This antibody is purified through a protein A column, followed by peptide affinity purification.
Storage	Maintain refrigerated at 2-8°C for up to 2 weeks. For long term storage store at -20°C in small aliquots to prevent freeze-thaw cycles.
Precautions	PSME2 Antibody (Center) is for research use only and not for use in diagnostic or therapeutic procedures.

Protein Information

Name	PSME2
-------------	-------

Function

Implicated in immunoproteasome assembly and required for efficient antigen processing. The PA28 activator complex enhances the generation of class I binding peptides by altering the cleavage pattern of the proteasome.

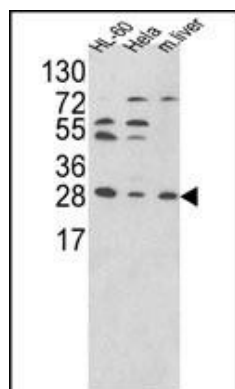
Background

The 26S proteasome is a multicatalytic proteinase complex with a highly ordered structure composed of 2 complexes, a 20S core and a 19S regulator. The 20S core is composed of 4 rings of 28 non-identical subunits; 2 rings are composed of 7 alpha subunits and 2 rings are composed of 7 beta subunits. The 19S regulator is composed of a base, which contains 6 ATPase subunits and 2 non-ATPase subunits, and a lid, which contains up to 10 non-ATPase subunits. Proteasomes are distributed throughout eukaryotic cells at a high concentration and cleave peptides in an ATP/ubiquitin-dependent process in a non-lysosomal pathway. An essential function of a modified proteasome, the immunoproteasome, is the processing of class I MHC peptides. The immunoproteasome contains an alternate regulator, referred to as the 11S regulator or PA28, that replaces the 19S regulator. Three subunits (alpha, beta and gamma) of the 11S regulator have been identified. PSME2 is the beta subunit of the 11S regulator, one of the two 11S subunits that is induced by gamma-interferon.

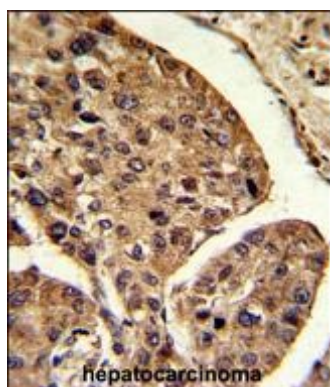
References

Conticello, S.G., Curr. Biol. 13 (22), 2009-2013 (2003)

Images

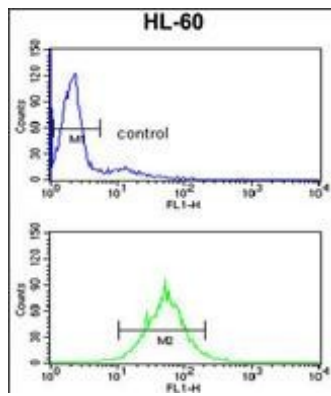


Western blot analysis of PSME2 Antibody (Center) (Cat. #AP6692c) in HL-60, Hela cell line and mouse liver tissue lysates (35ug/lane). PSME2 (arrow) was detected using the purified Pab.



Formalin-fixed and paraffin-embedded mouse hepatocarcinoma reacted with PSME2 Antibody (Center), which was peroxidase-conjugated to the secondary antibody, followed by DAB staining. This data demonstrates the use of this antibody for immunohistochemistry; clinical relevance has not been evaluated.

PSME2 Antibody (Center) (Cat. #AP6692c) flow cytometry analysis of HL-60 cells (bottom histogram) compared to a negative control cell (top histogram). FITC-conjugated goat-anti-rabbit secondary antibodies were used for the analysis.



Please note: All products are 'FOR RESEARCH USE ONLY. NOT FOR USE IN DIAGNOSTIC OR THERAPEUTIC PROCEDURES'.