

Cdc25C (phospho Ser216) Polyclonal Antibody

Catalog # AP66990

Product Information

Application	WB, IHC-P
Primary Accession	P30307
Reactivity	Human
Host	Rabbit
Clonality	Polyclonal
Calculated MW	53365

Additional Information

Gene ID	995
Other Names	CDC25C; M-phase inducer phosphatase 3; Dual specificity phosphatase Cdc25C
Dilution	WB~~Western Blot: 1/500 - 1/2000. Immunohistochemistry: 1/100 - 1/300. ELISA: 1/10000. Not yet tested in other applications. IHC-P~~N/A
Format	Liquid in PBS containing 50% glycerol, 0.5% BSA and 0.09% (W/V) sodium azide.
Storage Conditions	-20°C

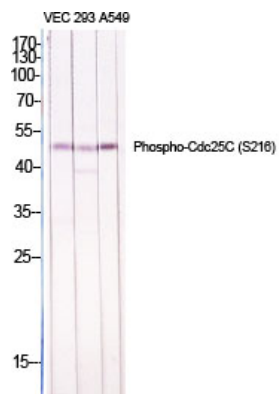
Protein Information

Name	CDC25C
Function	Functions as a dosage-dependent inducer in mitotic control. Tyrosine protein phosphatase required for progression of the cell cycle (PubMed: 8119945). When phosphorylated, highly effective in activating G2 cells into prophase (PubMed: 8119945). Directly dephosphorylates CDK1 and activates its kinase activity (PubMed: 8119945).
Cellular Location	Nucleus

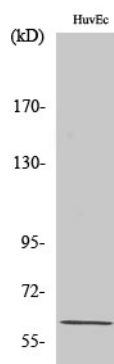
Background

Functions as a dosage-dependent inducer in mitotic control. Tyrosine protein phosphatase required for progression of the cell cycle. When phosphorylated, highly effective in activating G2 cells into prophase. Directly dephosphorylates CDK1 and activates its kinase activity.

Images



Western Blot analysis of various cells using
Phospho-Cdc25C (S216) Polyclonal Antibody diluted at
1 : 1000



Western Blot analysis of HuvEc cells using
Phospho-Cdc25C (S216) Polyclonal Antibody diluted at
1 : 1000

Please note: All products are 'FOR RESEARCH USE ONLY. NOT FOR USE IN DIAGNOSTIC OR THERAPEUTIC PROCEDURES'.