

Cytokeratin 8 (phospho Ser73) Polyclonal Antibody

Catalog # AP67014

Product Information

Application	WB, IHC-P
Primary Accession	P05787
Reactivity	Human, Mouse
Host	Rabbit
Clonality	Polyclonal
Calculated MW	53704

Additional Information

Gene ID	3856
Other Names	KRT8; CYK8; Keratin; type II cytoskeletal 8; Cytokeratin-8; CK-8; Keratin-8; K8; Type-II keratin Kb8
Dilution	WB~~Western Blot: 1/500 - 1/2000. Immunohistochemistry: 1/100 - 1/300. ELISA: 1/40000. Not yet tested in other applications. IHC-P~~N/A
Format	Liquid in PBS containing 50% glycerol, 0.5% BSA and 0.09% (W/V) sodium azide.
Storage Conditions	-20°C

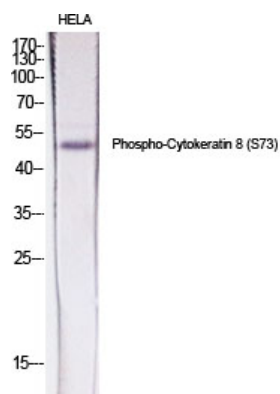
Protein Information

Name	KRT8
Synonyms	CYK8
Function	Together with KRT19, helps to link the contractile apparatus to dystrophin at the costameres of striated muscle.
Cellular Location	Cytoplasm. Nucleus, nucleoplasm {ECO:0000250 UniProtKB:Q10758}. Nucleus matrix {ECO:0000250 UniProtKB:Q10758}
Tissue Location	Observed in muscle fibers accumulating in the costameres of myoplasm at the sarcolemma membrane in structures that contain dystrophin and spectrin. Expressed in gingival mucosa and hard palate of the oral cavity.

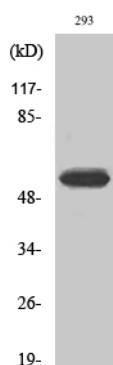
Background

Together with KRT19, helps to link the contractile apparatus to dystrophin at the costameres of striated muscle.

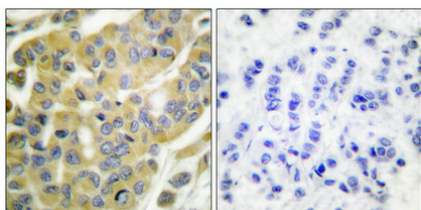
Images



Western Blot analysis of various cells using Phospho-Cytokeratin 8 (S73) Polyclonal Antibody diluted at 1 : 500



Western Blot analysis of 293 cells using Phospho-Cytokeratin 8 (S73) Polyclonal Antibody diluted at 1 : 500



Immunohistochemical analysis of paraffin-embedded Human breast cancer. Antibody was diluted at 1:100(4°,overnight). High-pressure and temperature Tris-EDTA,pH8.0 was used for antigen retrieval. Negative contrl (right) obtained from antibody was pre-absorbed by immunogen peptide.

Please note: All products are 'FOR RESEARCH USE ONLY. NOT FOR USE IN DIAGNOSTIC OR THERAPEUTIC PROCEDURES'.