

Erbin (phospho Tyr1104) Polyclonal Antibody

Catalog # AP67031

Product Information

Application	WB
Primary Accession	Q96RT1
Reactivity	Human
Host	Rabbit
Clonality	Polyclonal
Calculated MW	158298

Additional Information

Gene ID	55914
Other Names	ERBB2IP; ERBIN; KIAA1225; LAP2; Protein LAP2; Densin-180-like protein; Erbb2-interacting protein; Erbin
Dilution	WB~~Western Blot: 1/500 - 1/2000. ELISA: 1/10000. Not yet tested in other applications.
Format	Liquid in PBS containing 50% glycerol, 0.5% BSA and 0.09% (W/V) sodium azide.
Storage Conditions	-20°C

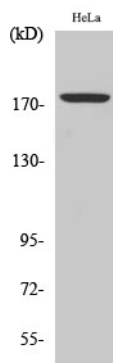
Protein Information

Name	ERBIN {ECO:0000303 PubMed:10878805}
Function	Acts as an adapter for the receptor ERBB2, in epithelia. By binding the unphosphorylated 'Tyr-1248' of receptor ERBB2, it may contribute to stabilize this unphosphorylated state (PubMed: 16203728). Inhibits NOD2-dependent NF-kappa-B signaling and pro-inflammatory cytokine secretion (PubMed: 16203728).
Cellular Location	Cell junction, hemidesmosome. Nucleus membrane. Basolateral cell membrane. Note=Found in hemidesmosomes, which are cell-substrate adhesion complexes in stratified epithelia. In transfected cells, either diffusely distributed over the cytoplasm or concentrated at the basolateral membrane. Colocalizes with the adrenergic receptors, ADREN1A and ADREN1B, at the nuclear membrane of cardiac myocytes (By similarity).
Tissue Location	Highly expressed in brain, heart, kidney, muscle and stomach, followed by liver, spleen and intestine

Background

Acts as an adapter for the receptor ERBB2, in epithelia. By binding the unphosphorylated 'Tyr-1248' of receptor ERBB2, it may contribute to stabilize this unphosphorylated state (PubMed:[16203728](#)). Inhibits NOD2-dependent NF-kappa-B signaling and proinflammatory cytokine secretion (PubMed:[16203728](#)).

Images



Western Blot analysis of various cells using Phospho-Erbin (Y1104) Polyclonal Antibody

Please note: All products are 'FOR RESEARCH USE ONLY. NOT FOR USE IN DIAGNOSTIC OR THERAPEUTIC PROCEDURES'.