

SERPINA7 Antibody (N-term)

Affinity Purified Rabbit Polyclonal Antibody (Pab)

Catalog # AP6714a

Product Information

Application	WB, E
Primary Accession	P05543
Reactivity	Human
Host	Rabbit
Clonality	Polyclonal
Isotype	Rabbit IgG
Calculated MW	46325
Antigen Region	37-65

Additional Information

Gene ID	6906
Other Names	Thyroxine-binding globulin, Serpin A7, T4-binding globulin, SERPINA7, TBG
Target/Specificity	This SERPINA7 antibody is generated from rabbits immunized with a KLH conjugated synthetic peptide between 37-65 amino acids from the N-terminal region of human SERPINA7.
Dilution	WB~~1:1000 E~~Use at an assay dependent concentration.
Format	Purified polyclonal antibody supplied in PBS with 0.09% (W/V) sodium azide. This antibody is purified through a protein A column, followed by peptide affinity purification.
Storage	Maintain refrigerated at 2-8°C for up to 2 weeks. For long term storage store at -20°C in small aliquots to prevent freeze-thaw cycles.
Precautions	SERPINA7 Antibody (N-term) is for research use only and not for use in diagnostic or therapeutic procedures.

Protein Information

Name	SERPINA7
Synonyms	TBG
Function	Major thyroid hormone transport protein in serum.
Cellular Location	Secreted.

Tissue Location

Expressed by the liver and secreted in plasma.

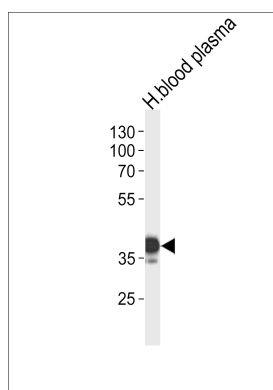
Background

SERPINA7 is the major thyroid hormone transport protein in man (summarized by Mori et al., 1995 [PubMed 8530630]). Inherited abnormalities in the level of serum TBG have been classified as partial deficiency, complete deficiency, and excess. Patients are euthyroid.

References

Domingues, R., et al. Endocrine 36(1):83-86(2009)
Lacka, K., et al. Thyroid 17(11):1143-1146(2007)
Liu, T., et al. J. Proteome Res. 4(6):2070-2080(2005)
Ross, M.T., et al. Nature 434(7031):325-337(2005)
Anderson, N.L., et al. Mol. Cell Proteomics 3(4):311-326(2004)

Images



SERPINA7 Antibody (N-term) (Cat. #AP6714a) western blot analysis in human blood plasma tissue lysates (35ug/lane). This demonstrates the SERPINA7 antibody detected the SERPINA7 protein (arrow).

Please note: All products are 'FOR RESEARCH USE ONLY. NOT FOR USE IN DIAGNOSTIC OR THERAPEUTIC PROCEDURES'.