

Paxillin (phospho Tyr118) Polyclonal Antibody

Catalog # AP67151

Product Information

Application	WB, E
Primary Accession	P49023
Reactivity	Human, Mouse, Rat
Host	Rabbit
Clonality	Polyclonal

Additional Information

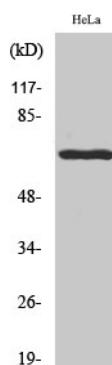
Other Names	PXN; Paxillin
Dilution	WB~Western Blot: 1/500 - 1/2000. ELISA: 1/10000. Not yet tested in other applications. E~N/A
Format	Liquid in PBS containing 50% glycerol, 0.5% BSA and 0.09% (W/V) sodium azide.
Storage Conditions	-20°C

Protein Information

Background

Cytoskeletal protein involved in actin-membrane attachment at sites of cell adhesion to the extracellular matrix (focal adhesion).

Images



Western Blot analysis of various cells using Phospho-Paxillin (Y118) Polyclonal Antibody

Please note: All products are 'FOR RESEARCH USE ONLY. NOT FOR USE IN DIAGNOSTIC OR THERAPEUTIC PROCEDURES'.