

Stat3 (phospho Tyr705) Polyclonal Antibody

Catalog # AP67183

Product Information

Application	WB, IHC-P, IF, IP
Primary Accession	P40763
Reactivity	Human, Mouse, Rat
Host	Rabbit
Clonality	Polyclonal
Calculated MW	88068

Additional Information

Gene ID	6774
Other Names	STAT3; APRF; Signal transducer and activator of transcription 3; Acute-phase response factor
Dilution	WB~~IF: 1:50-200 Western Blot: 1/500 - 1/2000. Immunohistochemistry: 1/100 - 1/300. Immunoprecipitation: 2-5 ug/mg lysate. ELISA: 1/20000. Not yet tested in other applications. IHC-P~~IF: 1:50-200 Western Blot: 1/500 - 1/2000. Immunohistochemistry: 1/100 - 1/300. Immunoprecipitation: 2-5 ug/mg lysate. ELISA: 1/20000. Not yet tested in other applications. IF~~IF: 1:50-200 Western Blot: 1/500 - 1/2000. Immunohistochemistry: 1/100 - 1/300. Immunoprecipitation: 2-5 ug/mg lysate. ELISA: 1/20000. Not yet tested in other applications. IP~~N/A
Format	Liquid in PBS containing 50% glycerol, 0.5% BSA and 0.09% (W/V) sodium azide.
Storage Conditions	-20°C

Protein Information

Name	STAT3 {ECO:0000303 PubMed:9630560, ECO:0000312 HGNC:HGNC:11364}
Function	Signal transducer and transcription activator that mediates cellular responses to interleukins, KITLG/SCF, LEP and other growth factors (PubMed: 10688651 , PubMed: 12359225 , PubMed: 12873986 , PubMed: 15194700 , PubMed: 15653507 , PubMed: 16285960 , PubMed: 17344214 , PubMed: 18242580 , PubMed: 18782771 , PubMed: 22306293 , PubMed: 23084476 , PubMed: 28262505 , PubMed: 32929201 , PubMed: 38404237). Once activated, recruits coactivators, such as NCOA1 or MED1, to the promoter region of the target gene (PubMed: 15653507 , PubMed: 16285960 , PubMed: 17344214 , PubMed: 18782771 , PubMed: 28262505 , PubMed: 32929201). May mediate cellular responses to activated FGFR1, FGFR2, FGFR3 and FGFR4

(PubMed:[12873986](#)). Upon activation of IL6ST/gp130 signaling by interleukin-6 (IL6), binds to the IL6-responsive elements identified in the promoters of various acute-phase protein genes (PubMed:[12359225](#)). Activated by IL31 through IL31RA (PubMed:[15194700](#)). Acts as a regulator of inflammatory response by regulating differentiation of naive CD4(+) T-cells into T-helper Th17 or regulatory T-cells (Treg): acetylation promotes its transcription activity and cell differentiation while deacetylation and oxidation of lysine residues by LOXL3 inhibits differentiation (PubMed:[28065600](#), PubMed:[28262505](#)). Involved in cell cycle regulation by inducing the expression of key genes for the progression from G1 to S phase, such as CCND1 (PubMed:[17344214](#)). Mediates the effects of LEP on melanocortin production, body energy homeostasis and lactation (By similarity). May play an apoptotic role by transactivating BIRC5 expression under LEP activation (PubMed:[18242580](#)). Cytoplasmic STAT3 represses macroautophagy by inhibiting EIF2AK2/PKR activity (PubMed:[23084476](#)). Plays a crucial role in basal beta cell functions, such as regulation of insulin secretion (By similarity). Following JAK/STAT signaling activation and as part of a complex with NFATC3 and NFATC4, binds to the alpha-beta E4 promoter region of CRYAB and activates transcription in cardiomyocytes (By similarity).

Cellular Location

Cytoplasm. Nucleus Note=Shuttles between the nucleus and the cytoplasm (PubMed:[29162862](#)) Translocated into the nucleus upon tyrosine phosphorylation and dimerization, in response to signaling by activated FGFR1, FGFR2, FGFR3 or FGFR4 (PubMed:[15653507](#), PubMed:[16285960](#)). Constitutive nuclear presence is independent of tyrosine phosphorylation. Predominantly present in the cytoplasm without stimuli. Upon leukemia inhibitory factor (LIF) stimulation, accumulates in the nucleus. The complex composed of BART and ARL2 plays an important role in the nuclear translocation and retention of STAT3. Identified in a complex with LYN and PAG1. Translocates to the nucleus in the presence of EDN1 (By similarity). {ECO:0000250|UniProtKB:P52631, ECO:0000269|PubMed:[15653507](#), ECO:0000269|PubMed:[16285960](#), ECO:0000269|PubMed:[29162862](#)}

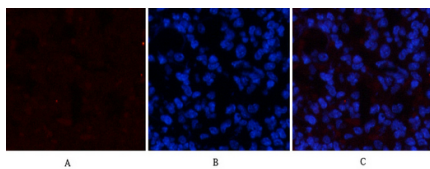
Tissue Location

Heart, brain, placenta, lung, liver, skeletal muscle, kidney and pancreas. Expressed in naive CD4(+) T cells as well as T-helper Th17, Th1 and Th2 cells (PubMed:[31899195](#))

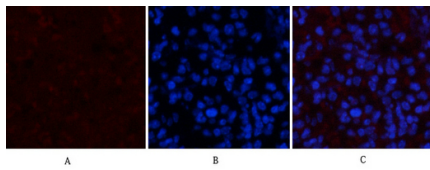
Background

Signal transducer and transcription activator that mediates cellular responses to interleukins, KITLG/SCF, LEP and other growth factors (PubMed:[10688651](#), PubMed:[12359225](#), PubMed:[12873986](#), PubMed:[15194700](#), PubMed:[17344214](#), PubMed:[18242580](#), PubMed:[23084476](#)). Once activated, recruits coactivators, such as NCOA1 or MED1, to the promoter region of the target gene (PubMed:[17344214](#)). May mediate cellular responses to activated FGFR1, FGFR2, FGFR3 and FGFR4 (PubMed:[12873986](#)). Binds to the interleukin-6 (IL-6)-responsive elements identified in the promoters of various acute-phase protein genes (PubMed:[12359225](#)). Activated by IL31 through IL31RA (PubMed:[15194700](#)). Acts as a regulator of inflammatory response by regulating differentiation of naive CD4(+) T-cells into T-helper Th17 or regulatory T-cells (Treg): deacetylation and oxidation of lysine residues by LOXL3, leads to disrupt STAT3 dimerization and inhibit its transcription activity (PubMed:[28065600](#)). Involved in cell cycle regulation by inducing the expression of key genes for the progression from G1 to S phase, such as CCND1 (PubMed:[17344214](#)). Mediates the effects of LEP on melanocortin production, body energy homeostasis and lactation (By similarity). May play an apoptotic role by transactivating BIRC5 expression under LEP activation (PubMed:[18242580](#)). Cytoplasmic STAT3 represses macroautophagy by inhibiting EIF2AK2/PKR activity (PubMed:[23084476](#)). Plays a crucial role in basal beta cell functions, such as regulation of insulin secretion (By similarity).

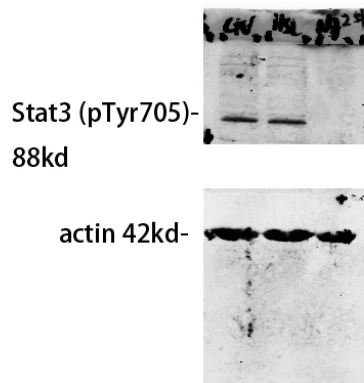
Images



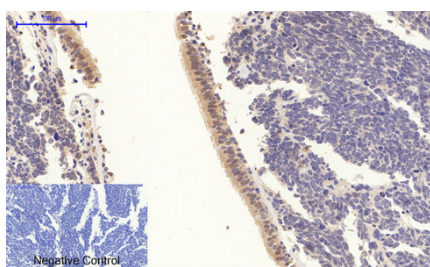
Immunofluorescence analysis of mouse-spleen tissue. 1, Stat3 (phospho Tyr705) Polyclonal Antibody (red) was diluted at 1:200 (4°C, overnight). 2, Cy3 labeled Secondary antibody was diluted at 1:300 (room temperature, 50 min). 3, Picture B: DAPI (blue) 10 min. Picture A: Target. Picture B: DAPI. Picture C: merge of A+B



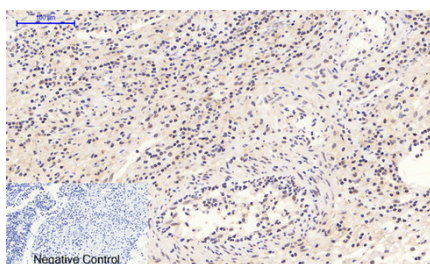
Immunofluorescence analysis of mouse-spleen tissue. 1, Stat3 (phospho Tyr705) Polyclonal Antibody (red) was diluted at 1:200 (4°C, overnight). 2, Cy3 labeled Secondary antibody was diluted at 1:300 (room temperature, 50 min). 3, Picture B: DAPI (blue) 10 min. Picture A: Target. Picture B: DAPI. Picture C: merge of A+B



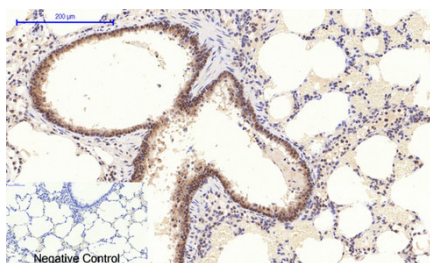
Western Blot analysis of our customer's samples using primary antibody diluted at 1:500. The picture was kindly provided by our customer. Cell lysate was extracted by Minute™ Plasma Membrane Protein Isolation and Cell Fractionation Kit (SM-005, Invent Biotech, MN, USA).



Immunohistochemical analysis of paraffin-embedded Human-lung-cancer tissue. 1, Stat3 (phospho Tyr705) Polyclonal Antibody was diluted at 1:200 (4°C, overnight). 2, Sodium citrate pH 6.0 was used for antibody retrieval (>98°C, 20 min). 3, Secondary antibody was diluted at 1:200 (room temperature, 30 min). Negative control was used by secondary antibody only.

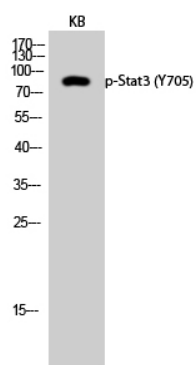
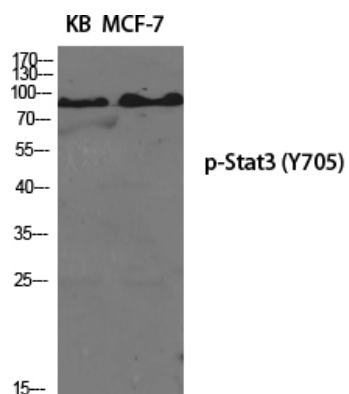


Immunohistochemical analysis of paraffin-embedded Human-Appendix tissue. 1, Stat3 (phospho Tyr705) Polyclonal Antibody was diluted at 1:200 (4°C, overnight). 2, Sodium citrate pH 6.0 was used for antibody retrieval (>98°C, 20 min). 3, Secondary antibody was diluted at 1:200 (room temperature, 30 min). Negative control was used by secondary antibody only.



Immunohistochemical analysis of paraffin-embedded Rat-lung tissue. 1, Stat3 (phospho Tyr705) Polyclonal Antibody was diluted at 1:200 (4°C, overnight). 2, Sodium citrate pH 6.0 was used for antibody retrieval (>98°C, 20 min). 3, Secondary antibody was diluted at 1:200 (room temperature, 30 min). Negative control was used by secondary antibody only.

Western Blot analysis of various cells using Phospho-Stat3 (Y705) Polyclonal Antibody diluted at 1 : 2000



Western Blot analysis of KB cells using Phospho-Stat3 (Y705) Polyclonal Antibody diluted at 1 : 2000

Please note: All products are 'FOR RESEARCH USE ONLY. NOT FOR USE IN DIAGNOSTIC OR THERAPEUTIC PROCEDURES'.