

Synapsin I (phospho Ser9) Polyclonal Antibody

Catalog # AP67189

Product Information

Application	WB, IHC-P, IF, ICC, E
Primary Accession	P17600
Reactivity	Human, Mouse, Rat
Host	Rabbit
Clonality	Polyclonal

Additional Information

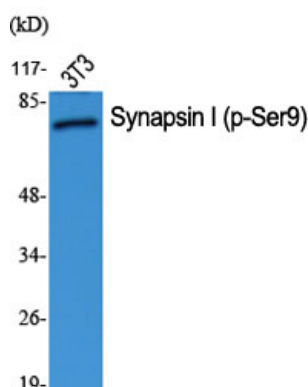
Other Names	SYN1; Synapsin-1; Brain protein 4.1; Synapsin I
Dilution	WB~Western Blot: 1/500 - 1/2000. Immunohistochemistry: 1/100 - 1/300. Immunofluorescence: 1/200 - 1/1000. ELISA: 1/20000. Not yet tested in other applications. IHC-P~N/A IF~1:50~200 ICC~N/A E~N/A
Format	Liquid in PBS containing 50% glycerol, 0.5% BSA and 0.09% (W/V) sodium azide.
Storage Conditions	-20°C

Protein Information

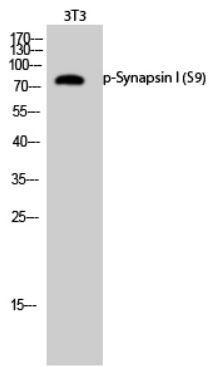
Background

Neuronal phosphoprotein that coats synaptic vesicles, binds to the cytoskeleton, and is believed to function in the regulation of neurotransmitter release. The complex formed with NOS1 and CAPON proteins is necessary for specific nitric-oxid functions at a presynaptic level.

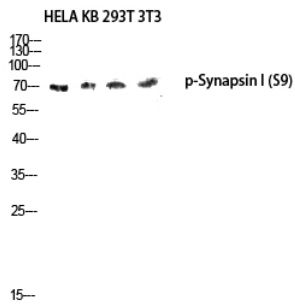
Images



Western Blot analysis of various cells using Phospho-Synapsin I (S9) Polyclonal Antibody diluted at 1 : 1000



Western Blot analysis of 3T3 cells using Phospho-Synapsin I (S9) Polyclonal Antibody diluted at 1 : 1000



Western blot analysis of HELA KB 293T 3T3 lysis using Phospho-Synapsin I (S9) antibody. Antibody was diluted at 1:1000

Please note: All products are 'FOR RESEARCH USE ONLY. NOT FOR USE IN DIAGNOSTIC OR THERAPEUTIC PROCEDURES'.