

MAML3 Antibody (C-term)

Purified Rabbit Polyclonal Antibody (Pab)

Catalog # AP6719b

Product Information

Application	WB, IHC-P, FC, E
Primary Accession	Q96JK9
Reactivity	Human
Host	Rabbit
Clonality	Polyclonal
Isotype	Rabbit IgG
Clone Names	RB18761
Calculated MW	122293
Antigen Region	640-665

Additional Information

Gene ID	55534
Other Names	Mastermind-like protein 3, Mam-3, MAML3 (HGNC:16272)
Target/Specificity	This MAML3 antibody is generated from rabbits immunized with a KLH conjugated synthetic peptide between 640-665 amino acids from the C-terminal region of human MAML3.
Dilution	WB~~1:1000 IHC-P~~1:100~500 FC~~1:10~50 E~~Use at an assay dependent concentration.
Format	Purified polyclonal antibody supplied in PBS with 0.09% (W/V) sodium azide. This antibody is prepared by Saturated Ammonium Sulfate (SAS) precipitation followed by dialysis against PBS.
Storage	Maintain refrigerated at 2-8°C for up to 2 weeks. For long term storage store at -20°C in small aliquots to prevent freeze-thaw cycles.
Precautions	MAML3 Antibody (C-term) is for research use only and not for use in diagnostic or therapeutic procedures.

Protein Information

Name	MAML3 (HGNC:16272)
Function	Acts as a transcriptional coactivator for NOTCH proteins. Has been shown to amplify NOTCH-induced transcription of HES1.
Cellular Location	Nucleus speckle. Note=Nuclear, in a punctate manner

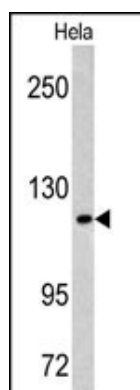
Background

MAML3 acts as a transcriptional coactivator for NOTCH proteins. The protein has been shown to amplify NOTCH-induced transcription of HES1.

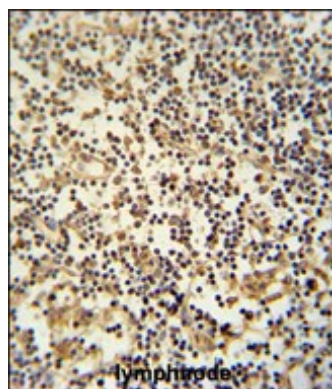
References

Tonon,G., Nat. Genet. 33 (2), 208-213 (2003)
Lin,S.E., J. Biol. Chem. 277 (52), 50612-50620 (2002)

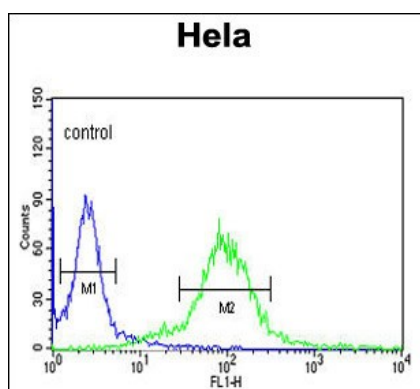
Images



Western blot analysis of MAML3 antibody (C-term) (Cat. #AP6719b) in HeLa cell line lysates (35ug/lane). MAML3 (arrow) was detected using the purified Pab.



MAML3 Antibody (C-term) (Cat. #AP6719b) immunohistochemistry analysis in formalin fixed and paraffin embedded human lymphnode followed by peroxidase conjugation of the secondary antibody and DAB staining. This data demonstrates the use of the MAML3 Antibody (C-term) for immunohistochemistry. Clinical relevance has not been evaluated.



MAML3 Antibody (C-term) (Cat. #AP6719b) flow cytometric analysis of HeLa cells (right histogram) compared to a negative control cell (left histogram). FITC-conjugated goat-anti-rabbit secondary antibodies were used for the analysis.

Please note: All products are 'FOR RESEARCH USE ONLY. NOT FOR USE IN DIAGNOSTIC OR THERAPEUTIC PROCEDURES'.