

# ATRIP (phospho Ser68) Polyclonal Antibody

Catalog # AP67268

## Product Information

---

<b>Application</b>	WB
<b>Primary Accession</b>	<a href="#">Q8WXE1</a>
<b>Reactivity</b>	Human, Mouse, Rat
<b>Host</b>	Rabbit
<b>Clonality</b>	Polyclonal
<b>Calculated MW</b>	85838

## Additional Information

---

<b>Gene ID</b>	84126
<b>Other Names</b>	ATRIP; AGS1; ATR-interacting protein; ATM and Rad3-related-interacting protein
<b>Dilution</b>	WB~~Western Blot: 1/500 - 1/2000. ELISA: 1/40000. Not yet tested in other applications.
<b>Format</b>	Liquid in PBS containing 50% glycerol, 0.5% BSA and 0.09% (W/V) sodium azide.
<b>Storage Conditions</b>	-20°C

## Protein Information

---

<b>Name</b>	ATRIP
<b>Synonyms</b>	AGS1
<b>Function</b>	Required for checkpoint signaling after DNA damage. Required for ATR expression, possibly by stabilizing the protein.
<b>Cellular Location</b>	Nucleus. Note=Redistributes to discrete nuclear foci upon DNA damage
<b>Tissue Location</b>	Ubiquitous..

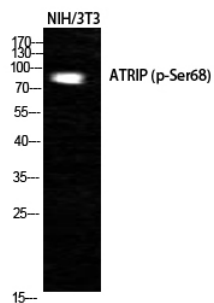
## Background

---

Required for checkpoint signaling after DNA damage. Required for ATR expression, possibly by stabilizing the protein.

## Images

---



Western Blot analysis of NIH-3T3 cells using Phospho-ATRIP (S68) Polyclonal Antibody cells nucleus extracted by Minute TM Cytoplasmic and Nuclear Fractionation kit (SC-003, Inventbiotech, MN, USA).

Please note: All products are 'FOR RESEARCH USE ONLY. NOT FOR USE IN DIAGNOSTIC OR THERAPEUTIC PROCEDURES'.