

CD40 (phospho Thr254) Polyclonal Antibody

Catalog # AP67311

Product Information

Application	WB
Primary Accession	P25942
Reactivity	Human, Mouse
Host	Rabbit
Clonality	Polyclonal
Calculated MW	30619

Additional Information

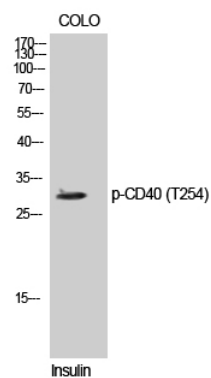
Gene ID	958
Other Names	CD40; TNFRSF5; Tumor necrosis factor receptor superfamily member 5; B-cell surface antigen CD40; Bp50; CD40L receptor; CDw40; CD antigen CD40
Dilution	WB~~Western Blot: 1/500 - 1/2000. ELISA: 1/5000. Not yet tested in other applications.
Format	Liquid in PBS containing 50% glycerol, 0.5% BSA and 0.09% (W/V) sodium azide.
Storage Conditions	-20°C

Protein Information

Name	CD40
Synonyms	TNFRSF5
Function	Receptor for TNFSF5/CD40LG (PubMed: 31331973). Transduces TRAF6- and MAP3K8-mediated signals that activate ERK in macrophages and B cells, leading to induction of immunoglobulin secretion (By similarity).
Cellular Location	[Isoform I]: Cell membrane; Single-pass type I membrane protein
Tissue Location	B-cells and in primary carcinomas.

Background

Receptor for TNFSF5/CD40LG. Transduces TRAF6- and MAP3K8-mediated signals that activate ERK in macrophages and B cells, leading to induction of immunoglobulin secretion.



Western Blot analysis of COLO cells using Phospho-CD40 (T254) Polyclonal Antibody diluted at 1 : 500

Please note: All products are 'FOR RESEARCH USE ONLY. NOT FOR USE IN DIAGNOSTIC OR THERAPEUTIC PROCEDURES'.