

Ezrin (phospho Tyr146) Polyclonal Antibody

Catalog # AP67341

Product Information

Application	WB, E
Primary Accession	P15311
Reactivity	Human, Mouse, Rat
Host	Rabbit
Clonality	Polyclonal
Calculated MW	69413

Additional Information

Gene ID	7430
Other Names	EZR; VIL2; Ezrin; Cytovillin; Villin-2; p81
Dilution	WB~~Western Blot: 1/500 - 1/2000. ELISA: 1/40000. Not yet tested in other applications. E~~N/A
Format	Liquid in PBS containing 50% glycerol, 0.5% BSA and 0.09% (W/V) sodium azide.
Storage Conditions	-20°C

Protein Information

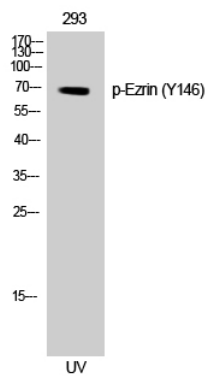
Name	EZR
Synonyms	VIL2
Function	Probably involved in connections of major cytoskeletal structures to the plasma membrane. In epithelial cells, required for the formation of microvilli and membrane ruffles on the apical pole. Along with PLEKHG6, required for normal macropinocytosis.
Cellular Location	Apical cell membrane; Peripheral membrane protein; Cytoplasmic side. Cell projection. Cell projection, microvillus membrane; Peripheral membrane protein; Cytoplasmic side. Cell projection, ruffle membrane; Peripheral membrane protein; Cytoplasmic side. Cytoplasm, cell cortex. Cytoplasm, cytoskeleton. Cell projection, microvillus {ECO:0000250 UniProtKB:P26040}. Note=Localization to the apical membrane of parietal cells depends on the interaction with PALS1 Localizes to cell extensions and peripheral processes of astrocytes (By similarity). Microvillar peripheral membrane protein (cytoplasmic side). {ECO:0000250 UniProtKB:P31977}
Tissue Location	Expressed in cerebral cortex, basal ganglia, hippocampus, hypophysis, and

optic nerve. Weakly expressed in brain stem and diencephalon. Stronger expression was detected in gray matter of frontal lobe compared to white matter (at protein level). Component of the microvilli of intestinal epithelial cells. Preferentially expressed in astrocytes of hippocampus, frontal cortex, thalamus, parahippocampal cortex, amygdala, insula, and corpus callosum. Not detected in neurons in most tissues studied

Background

Probably involved in connections of major cytoskeletal structures to the plasma membrane. In epithelial cells, required for the formation of microvilli and membrane ruffles on the apical pole. Along with PLEKHG6, required for normal macropinocytosis.

Images



Western Blot analysis of 293 cells using Phospho-Ezrin (Y146) Polyclonal Antibody

Please note: All products are 'FOR RESEARCH USE ONLY. NOT FOR USE IN DIAGNOSTIC OR THERAPEUTIC PROCEDURES'.