

# Fascin Antibody (Center)

Purified Rabbit Polyclonal Antibody (Pab)

Catalog # AP6736c

## Product Information

---

<b>Application</b>	WB, IHC-P, FC, E
<b>Primary Accession</b>	<a href="#">Q16658</a>
<b>Reactivity</b>	Human
<b>Host</b>	Rabbit
<b>Clonality</b>	Polyclonal
<b>Isotype</b>	Rabbit IgG
<b>Clone Names</b>	RB19501
<b>Calculated MW</b>	54530
<b>Antigen Region</b>	322-350

## Additional Information

---

<b>Gene ID</b>	6624
<b>Other Names</b>	Fascin, 55 kDa actin-bundling protein, Singed-like protein, p55, FSCN1, FAN1, HSN, SNL
<b>Target/Specificity</b>	This Fascin antibody is generated from rabbits immunized with a KLH conjugated synthetic peptide between 322-350 amino acids from the Central region of human Fascin.
<b>Dilution</b>	WB~~1:1000 IHC-P~~1:100~500 FC~~1:10~50 E~~Use at an assay dependent concentration.
<b>Format</b>	Purified polyclonal antibody supplied in PBS with 0.09% (W/V) sodium azide. This antibody is prepared by Saturated Ammonium Sulfate (SAS) precipitation followed by dialysis against PBS.
<b>Storage</b>	Maintain refrigerated at 2-8°C for up to 2 weeks. For long term storage store at -20°C in small aliquots to prevent freeze-thaw cycles.
<b>Precautions</b>	Fascin Antibody (Center) is for research use only and not for use in diagnostic or therapeutic procedures.

## Protein Information

---

<b>Name</b>	FSCN1
<b>Synonyms</b>	FAN1, HSN, SNL
<b>Function</b>	Actin-binding protein that contains 2 major actin binding sites

(PubMed:[21685497](#), PubMed:[23184945](#)). Organizes filamentous actin into parallel bundles (PubMed:[20393565](#), PubMed:[21685497](#), PubMed:[23184945](#)). Plays a role in the organization of actin filament bundles and the formation of microspikes, membrane ruffles, and stress fibers (PubMed:[22155786](#)). Important for the formation of a diverse set of cell protrusions, such as filopodia, and for cell motility and migration (PubMed:[20393565](#), PubMed:[21685497](#), PubMed:[23184945](#)). Mediates reorganization of the actin cytoskeleton and axon growth cone collapse in response to NGF (PubMed:[22155786](#)).

#### Cellular Location

Cytoplasm, cytosol. Cytoplasm, cell cortex. Cytoplasm, cytoskeleton. Cytoplasm, cytoskeleton, stress fiber. Cell projection, filopodium. Cell projection, invadopodium. Cell projection, microvillus. Cell junction. Note=Colocalized with RUFY3 and F-actin at filipodia of the axonal growth cone. Colocalized with DBN1 and F- actin at the transitional domain of the axonal growth cone (By similarity). {ECO:0000250|UniProtKB:Q61553, ECO:0000269|PubMed:21706053}

#### Tissue Location

Ubiquitous.

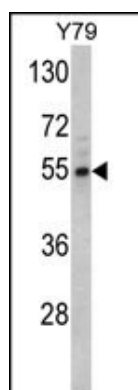
## Background

Fascin organizes filamentous actin into bundles with a minimum of 4.1:1 actin/fascin ratio. It is probably involved in the assembly of actin filament bundles present in microspikes, membrane ruffles, and stress fibers.

## References

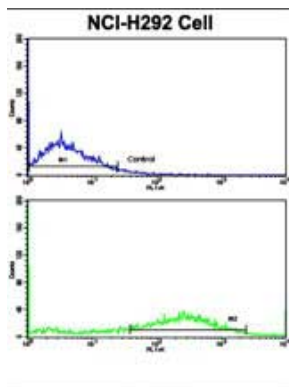
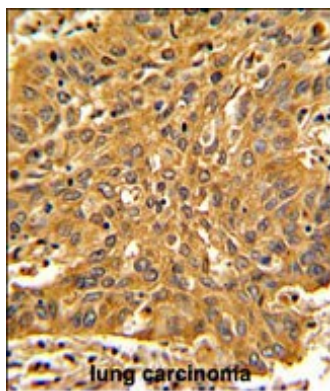
Qualtrough,D., Br. J. Cancer 101 (7), 1124-1129 (2009)  
Ono,S., J. Biol. Chem. 272 (4), 2527-2533 (1997)

## Images



Western blot analysis of Fascin Antibody (Center) (Cat. #AP6736c) in Y79 cell line lysates (35ug/lane). Fascin (arrow) was detected using the purified Pab.

Formalin-fixed and paraffin-embedded human lung carcinoma with Fascin Antibody (Center), which was peroxidase-conjugated to the secondary antibody, followed by DAB staining. This data demonstrates the use of this antibody for immunohistochemistry; clinical relevance has not been evaluated.



Flow cytometric analysis of NCI-H292 cells using Fascin Antibody (Center)(bottom histogram) compared to a negative control cell (top histogram). FITC-conjugated goat-anti-rabbit secondary antibodies were used for the analysis.

Please note: All products are 'FOR RESEARCH USE ONLY. NOT FOR USE IN DIAGNOSTIC OR THERAPEUTIC PROCEDURES'.