

Topo II α (phospho Thr1343) Polyclonal Antibody

Catalog # AP67378

Product Information

Application	WB, E
Primary Accession	P11388
Reactivity	Human, Rat, Mouse
Host	Rabbit
Clonality	Polyclonal
Calculated MW	174385

Additional Information

Gene ID	7153
Other Names	TOP2A; TOP2; DNA topoisomerase 2-alpha; DNA topoisomerase II; alpha isozyme
Dilution	WB~~Western Blot: 1/500 - 1/2000. ELISA: 1/5000. Not yet tested in other applications. E~~N/A
Format	Liquid in PBS containing 50% glycerol, 0.5% BSA and 0.09% (W/V) sodium azide.
Storage Conditions	-20°C

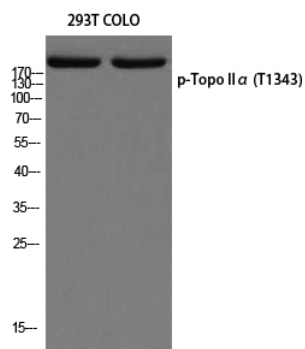
Protein Information

Name	TOP2A
Synonyms	TOP2
Function	Key decatenating enzyme that alters DNA topology by binding to two double-stranded DNA molecules, generating a double-stranded break in one of the strands, passing the intact strand through the broken strand, and religating the broken strand (PubMed: 17567603 , PubMed: 18790802 , PubMed: 22013166 , PubMed: 22323612 , PubMed: 27754753). May play a role in regulating the period length of BMAL1 transcriptional oscillation (By similarity).
Cellular Location	Cytoplasm. Nucleus, nucleoplasm. Nucleus. Nucleus, nucleolus
Tissue Location	Expressed in the tonsil, spleen, lymph node, thymus, skin, pancreas, testis, colon, kidney, liver, brain and lung (PubMed:9155056). Also found in high-grade lymphomas, squamous cell lung tumors and seminomas (PubMed:9155056)

Background

Control of topological states of DNA by transient breakage and subsequent rejoining of DNA strands. Topoisomerase II makes double-strand breaks. Essential during mitosis and meiosis for proper segregation of daughter chromosomes. May play a role in regulating the period length of ARNTL/BMAL1 transcriptional oscillation (By similarity).

Images



Western blot analysis of 293T COLO using p-Topo IIα (T1343) antibody. Antibody was diluted at 1:2000

Please note: All products are 'FOR RESEARCH USE ONLY. NOT FOR USE IN DIAGNOSTIC OR THERAPEUTIC PROCEDURES'.