

CHC1L Antibody (N-term)

Purified Rabbit Polyclonal Antibody (Pab)

Catalog # AP6741a

Product Information

Application	WB, IHC-P, FC, E
Primary Accession	O95199
Reactivity	Human, Rat, Mouse
Host	Rabbit
Clonality	Polyclonal
Isotype	Rabbit IgG
Clone Names	RB19789
Calculated MW	60315
Antigen Region	71-99

Additional Information

Gene ID	1102
Other Names	RCC1 and BTB domain-containing protein 2, Chromosome condensation 1-like, CHC1-L, RCC1-like G exchanging factor, Regulator of chromosome condensation and BTB domain-containing protein 2, RCBTB2, CHC1L, RLG
Target/Specificity	This CHC1L antibody is generated from rabbits immunized with a KLH conjugated synthetic peptide between 71-99 amino acids from the N-terminal region of human CHC1L.
Dilution	WB~~1:2000 IHC-P~~1:100~500 FC~~1:10~50 E~~Use at an assay dependent concentration.
Format	Purified polyclonal antibody supplied in PBS with 0.09% (W/V) sodium azide. This antibody is prepared by Saturated Ammonium Sulfate (SAS) precipitation followed by dialysis against PBS.
Storage	Maintain refrigerated at 2-8°C for up to 2 weeks. For long term storage store at -20°C in small aliquots to prevent freeze-thaw cycles.
Precautions	CHC1L Antibody (N-term) is for research use only and not for use in diagnostic or therapeutic procedures.

Protein Information

Name	RCBTB2
Synonyms	CHC1L, RLG

Cellular Location

Cytoplasmic vesicle, secretory vesicle, acrosome
{ECO:0000250|UniProtKB:Q99LJ7}. Note=Mainly found in the acrosomal cap region. {ECO:0000250|UniProtKB:Q99LJ7}

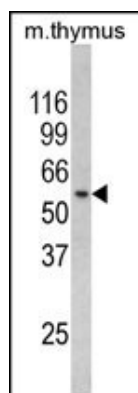
Background

RCBTB2 is a member of the RCC1-related GEF family. The N-terminal half of the amino acid sequence shows similarity to the regulator of chromosome condensation RCC1, which acts as a guanine nucleotide exchange factor (GEF) protein for the Ras-related GTPase Ran.

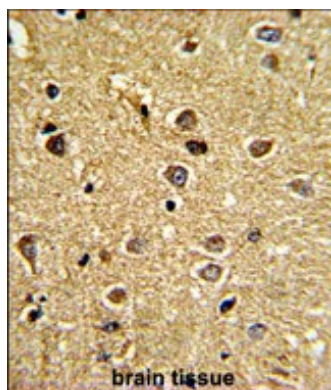
References

Latil,A., Int. J. Cancer 99 (5), 689-696 (2002)

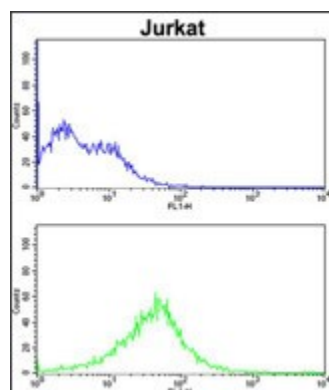
Images



Western blot analysis of CHC1L Antibody (N-term) (Cat. #AP6741a) in mouse thymus tissue lysates (35ug/lane). CHC1L (arrow) was detected using the purified Pab.



Formalin-fixed and paraffin-embedded human brain tissue reacted with CHC1L Antibody (N-term), which was peroxidase-conjugated to the secondary antibody, followed by DAB staining. This data demonstrates the use of this antibody for immunohistochemistry; clinical relevance has not been evaluated.



CHC1L Antibody (N-term) (Cat. #AP6741a) flow cytometric analysis of Jurkat cells (bottom histogram) compared to a negative control cell (top histogram). FITC-conjugated goat-anti-rabbit secondary antibodies were used for the analysis.