

# Bcl-2 (phospho Ser70) Polyclonal Antibody

Catalog # AP67424

## Product Information

---

<b>Application</b>	WB, E
<b>Reactivity</b>	Mouse, Rat
<b>Host</b>	Rabbit
<b>Clonality</b>	Polyclonal

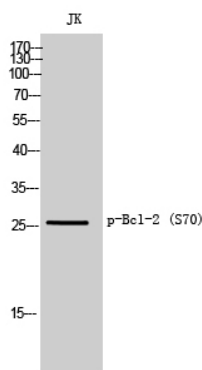
## Additional Information

---

<b>Other Names</b>	BCL2; Apoptosis regulator Bcl-2
<b>Dilution</b>	WB~Western Blot: 1/500 - 1/2000. ELISA: 1/40000. Not yet tested in other applications. E~N/A
<b>Format</b>	Liquid in PBS containing 50% glycerol, 0.5% BSA and 0.09% (W/V) sodium azide.
<b>Storage Conditions</b>	-20°C

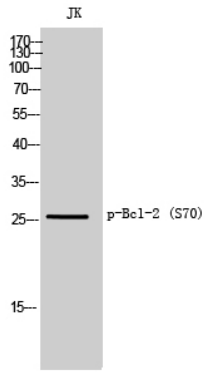
## Images

---



Western Blot analysis of JK cells using Phospho-Bcl-2 (S70) Polyclonal Antibody

Western Blot analysis of Jurkat cells using Phospho-Bcl-2 (S70) Polyclonal Antibody



Please note: All products are 'FOR RESEARCH USE ONLY. NOT FOR USE IN DIAGNOSTIC OR THERAPEUTIC PROCEDURES'.