

# TPH2 (phospho Ser19) Polyclonal Antibody

Catalog # AP67433

## Product Information

---

<b>Application</b>	WB
<b>Primary Accession</b>	<a href="#">Q8IWU9</a>
<b>Reactivity</b>	Human, Mouse, Rat
<b>Host</b>	Rabbit
<b>Clonality</b>	Polyclonal
<b>Calculated MW</b>	56057

## Additional Information

---

<b>Gene ID</b>	121278
<b>Other Names</b>	TPH2; NTPH; Tryptophan 5-hydroxylase 2; Neuronal tryptophan hydroxylase; Tryptophan 5-monooxygenase 2
<b>Dilution</b>	WB~~Western Blot: 1/500 - 1/2000. ELISA: 1/40000. Not yet tested in other applications.
<b>Format</b>	Liquid in PBS containing 50% glycerol, 0.5% BSA and 0.09% (W/V) sodium azide.
<b>Storage Conditions</b>	-20°C

## Protein Information

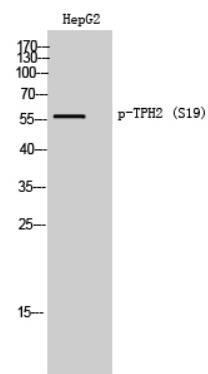
---

<b>Name</b>	TPH2
<b>Synonyms</b>	NTPH
<b>Tissue Location</b>	Brain specific.

## Images

---

Western Blot analysis of HepG2 cells using Phospho-TPH2 (S19) Polyclonal Antibody



Please note: All products are 'FOR RESEARCH USE ONLY. NOT FOR USE IN DIAGNOSTIC OR THERAPEUTIC PROCEDURES'.