

# Crk II (phospho Tyr221) Polyclonal Antibody

Catalog # AP67459

## Product Information

---

|                          |                           |
|--------------------------|---------------------------|
| <b>Application</b>       | WB, IF                    |
| <b>Primary Accession</b> | <a href="#">P46108</a>    |
| <b>Reactivity</b>        | Human, Mouse, Rat, Monkey |
| <b>Host</b>              | Rabbit                    |
| <b>Clonality</b>         | Polyclonal                |
| <b>Calculated MW</b>     | 33831                     |

## Additional Information

---

|                           |                                                                                                                                          |
|---------------------------|------------------------------------------------------------------------------------------------------------------------------------------|
| <b>Gene ID</b>            | 1398                                                                                                                                     |
| <b>Other Names</b>        | CRK; Adapter molecule crk; Proto-oncogene c-Crk; p38                                                                                     |
| <b>Dilution</b>           | WB~~Western Blot: 1/500 - 1/2000. Immunofluorescence: 1/200 - 1/1000. ELISA: 1/40000. Not yet tested in other applications. IF~~1:50~200 |
| <b>Format</b>             | Liquid in PBS containing 50% glycerol, 0.5% BSA and 0.09% (W/V) sodium azide.                                                            |
| <b>Storage Conditions</b> | -20°C                                                                                                                                    |

## Protein Information

---

|                          |                                                                                                          |
|--------------------------|----------------------------------------------------------------------------------------------------------|
| <b>Name</b>              | CRK                                                                                                      |
| <b>Function</b>          | Involved in cell branching and adhesion mediated by BCAR1- CRK-RAPGEF1 signaling and activation of RAP1. |
| <b>Cellular Location</b> | Cytoplasm. Cell membrane. Note=Translocated to the plasma membrane upon cell adhesion.                   |

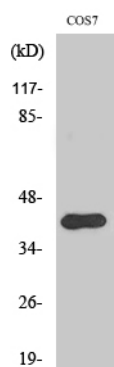
## Background

---

Isoform Crk-II: Regulates cell adhesion, spreading and migration. Mediates attachment-induced MAPK8 activation, membrane ruffling and cell motility in a Rac-dependent manner. Involved in phagocytosis of apoptotic cells and cell motility via its interaction with DOCK1 and DOCK4. May regulate the EFNA5-EPHA3 signaling.

## Images

---



Western Blot analysis of various cells using Phospho-Crk II (Y221) Polyclonal Antibody

Please note: All products are 'FOR RESEARCH USE ONLY. NOT FOR USE IN DIAGNOSTIC OR THERAPEUTIC PROCEDURES'.