

BAM32 (phospho Tyr139) Polyclonal Antibody

Catalog # AP67481

Product Information

Application	WB, IHC-P, IF
Primary Accession	Q9UN19
Reactivity	Human, Mouse
Host	Rabbit
Clonality	Polyclonal
Calculated MW	32194

Additional Information

Gene ID	27071
Other Names	DAPP1; BAM32; HSPC066; Dual adapter for phosphotyrosine and 3-phosphotyrosine and 3-phosphoinositide; hDAPP1; B lymphocyte adapter protein Bam32; B-cell adapter molecule of 32 kDa
Dilution	WB~~Western Blot: 1/500 - 1/2000. Immunohistochemistry: 1/100 - 1/300. Immunofluorescence: 1/200 - 1/1000. ELISA: 1/5000. Not yet tested in other applications. IHC-P~~N/A IF~~1:50~200
Format	Liquid in PBS containing 50% glycerol, 0.5% BSA and 0.09% (W/V) sodium azide.
Storage Conditions	-20°C

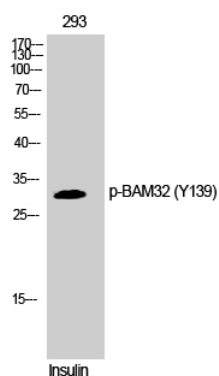
Protein Information

Name	DAPP1
Synonyms	BAM32
Function	May act as a B-cell-associated adapter that regulates B-cell antigen receptor (BCR)-signaling downstream of PI3K.
Cellular Location	Cytoplasm. Membrane; Peripheral membrane protein. Note=Membrane-associated after cell stimulation leading to its translocation
Tissue Location	Highly expressed in placenta and lung, followed by brain, heart, kidney, liver, pancreas and skeletal muscle. Expressed by B-lymphocytes, but not T-lymphocytes or nonhematopoietic cells

Background

May act as a B-cell-associated adapter that regulates B- cell antigen receptor (BCR)-signaling downstream of PI3K.

Images



Western Blot analysis of 293 cells using Phospho-BAM32 (Y139) Polyclonal Antibody

Please note: All products are 'FOR RESEARCH USE ONLY. NOT FOR USE IN DIAGNOSTIC OR THERAPEUTIC PROCEDURES'.