

COMTD1 Antibody (C-term)

Purified Rabbit Polyclonal Antibody (Pab)

Catalog # AP6751b

Product Information

Application	WB, E
Primary Accession	Q86VU5
Reactivity	Human, Mouse
Host	Rabbit
Clonality	Polyclonal
Isotype	Rabbit IgG
Clone Names	RB18114
Calculated MW	28809
Antigen Region	218-246

Additional Information

Gene ID	118881
Other Names	Catechol O-methyltransferase domain-containing protein 1, 211-, COMTD1
Target/Specificity	This COMTD1 antibody is generated from rabbits immunized with a KLH conjugated synthetic peptide between 218-246 amino acids from the C-terminal region of human COMTD1.
Dilution	WB~~1:1000 E~~Use at an assay dependent concentration.
Format	Purified polyclonal antibody supplied in PBS with 0.09% (W/V) sodium azide. This antibody is prepared by Saturated Ammonium Sulfate (SAS) precipitation followed by dialysis against PBS.
Storage	Maintain refrigerated at 2-8°C for up to 2 weeks. For long term storage store at -20°C in small aliquots to prevent freeze-thaw cycles.
Precautions	COMTD1 Antibody (C-term) is for research use only and not for use in diagnostic or therapeutic procedures.

Protein Information

Name	COMTD1
Function	Putative O-methyltransferase.
Cellular Location	Membrane; Single-pass type II membrane protein

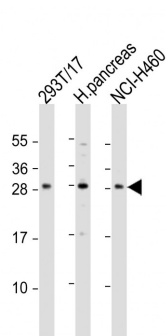
Background

COMTD1 is a putative O-methyltransferase.

References

Deloukas,P., et.al., Nature 429 (6990), 375-381 (2004)

Images



All lanes : Anti-COMTD1 Antibody (C-term) at 1:1000 dilution Lane 1: 293T/17 whole cell lysate Lane 2: human pancreas lysate Lane 3: NCI-H460 whole cell lysate Lysates/proteins at 20 µg per lane. Secondary Goat Anti-Rabbit IgG, (H+L), Peroxidase conjugated at 1/10000 dilution. Predicted band size : 29 kDa Blocking/Dilution buffer: 5% NFDM/TBST.

Please note: All products are 'FOR RESEARCH USE ONLY. NOT FOR USE IN DIAGNOSTIC OR THERAPEUTIC PROCEDURES'.