

# PLC $\gamma$ 1 (phospho Tyr771) Polyclonal Antibody

Catalog # AP67539

## Product Information

Application	WB, IHC-P
Primary Accession	<a href="#">P19174</a>
Reactivity	Human, Mouse, Rat, Monkey
Host	Rabbit
Clonality	Polyclonal
Calculated MW	148532

## Additional Information

Gene ID	5335
Other Names	PLCG1; PLC1; 1-phosphatidylinositol 4; 5-bisphosphate phosphodiesterase gamma-1; PLC-148; Phosphoinositide phospholipase C-gamma-1; Phospholipase C-II; PLC-II; Phospholipase C-gamma-1; PLC-gamma-1
Dilution	WB~~Western Blot: 1/500 - 1/2000. Immunohistochemistry: 1/100 - 1/300. ELISA: 1/40000. Not yet tested in other applications. IHC-P~~Western Blot: 1/500 - 1/2000. Immunohistochemistry: 1/100 - 1/300. ELISA: 1/40000. Not yet tested in other applications.
Format	Liquid in PBS containing 50% glycerol, 0.5% BSA and 0.09% (W/V) sodium azide.
Storage Conditions	-20°C

## Protein Information

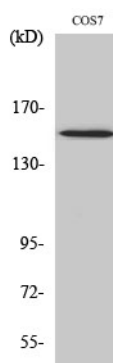
Name	PLCG1 ( <a href="#">HGNC:9065</a> )
Synonyms	PLC1
Function	Mediates the production of the second messenger molecules diacylglycerol (DAG) and inositol 1,4,5-trisphosphate (IP3). Plays an important role in the regulation of intracellular signaling cascades. Becomes activated in response to ligand-mediated activation of receptor-type tyrosine kinases, such as PDGFRA, PDGFRB, EGFR, FGFR1, FGFR2, FGFR3 and FGFR4 (By similarity). Plays a role in actin reorganization and cell migration (PubMed: <a href="#">17229814</a> ). Guanine nucleotide exchange factor that binds the GTPase DNM1 and catalyzes the dissociation of GDP, allowing a GTP molecule to bind in its place, therefore enhancing DNM1-dependent endocytosis (By similarity).
Cellular Location	Cell projection, lamellipodium. Cell projection, ruffle. Note=Rapidly redistributed to ruffles and lamellipodia structures in response to epidermal

growth factor (EGF) treatment.

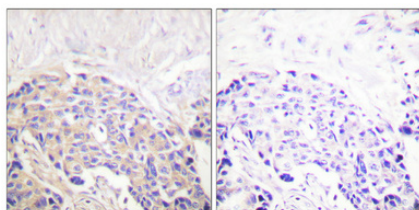
## Background

Mediates the production of the second messenger molecules diacylglycerol (DAG) and inositol 1,4,5-trisphosphate (IP3). Plays an important role in the regulation of intracellular signaling cascades. Becomes activated in response to ligand-mediated activation of receptor-type tyrosine kinases, such as PDGFRA, PDGFRB, FGFR1, FGFR2, FGFR3 and FGFR4. Plays a role in actin reorganization and cell migration.

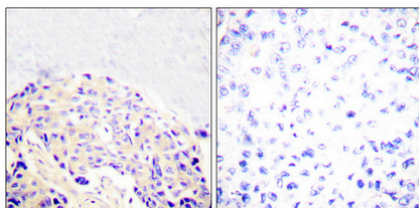
## Images



Western Blot analysis of various cells using Phospho-PLC  $\gamma$ 1 (Y771) Polyclonal Antibody



Immunohistochemical analysis of paraffin-embedded Human breast cancer. Antibody was diluted at 1:100(4°,overnight). High-pressure and temperature Tris-EDTA,pH8.0 was used for antigen retrieval. Negative contrl (right) obtaned from antibody was pre-absorbed by immunogen peptide.



Immunohistochemical analysis of paraffin-embedded Human breast cancer. Antibody was diluted at 1:100(4°,overnight). High-pressure and temperature Tris-EDTA,pH8.0 was used for antigen retrieval. Negative contrl (right) obtaned from antibody was pre-absorbed by immunogen peptide.

Please note: All products are 'FOR RESEARCH USE ONLY. NOT FOR USE IN DIAGNOSTIC OR THERAPEUTIC PROCEDURES'.