

IGFBP6 Antibody (C-term)

Purified Rabbit Polyclonal Antibody (Pab)

Catalog # AP6764b

Product Information

Application	WB, IHC-P, FC, E
Primary Accession	P24592
Other Accession	Q05718
Reactivity	Human
Predicted	Bovine
Host	Rabbit
Clonality	Polyclonal
Isotype	Rabbit IgG
Clone Names	RB20484
Calculated MW	25322
Antigen Region	176-200

Additional Information

Gene ID	3489
Other Names	Insulin-like growth factor-binding protein 6, IBP-6, IGF-binding protein 6, IGFBP-6, IGFBP6, IBP6
Target/Specificity	This IGFBP6 antibody is generated from rabbits immunized with a KLH conjugated synthetic peptide between 176-200 amino acids from the C-terminal region of human IGFBP6.
Dilution	WB~~1:1000 IHC-P~~1:100~500 FC~~1:10~50 E~~Use at an assay dependent concentration.
Format	Purified polyclonal antibody supplied in PBS with 0.09% (W/V) sodium azide. This antibody is prepared by Saturated Ammonium Sulfate (SAS) precipitation followed by dialysis against PBS.
Storage	Maintain refrigerated at 2-8°C for up to 2 weeks. For long term storage store at -20°C in small aliquots to prevent freeze-thaw cycles.
Precautions	IGFBP6 Antibody (C-term) is for research use only and not for use in diagnostic or therapeutic procedures.

Protein Information

Name	IGFBP6 (HGNC:5475)
Synonyms	IBP6

Function	IGF-binding proteins prolong the half-life of the IGFs and have been shown to either inhibit or stimulate the growth promoting effects of the IGFs on cell culture. They alter the interaction of IGFs with their cell surface receptors. Activates the MAPK signaling pathway and induces cell migration (PubMed: 24003225).
Cellular Location	Secreted.

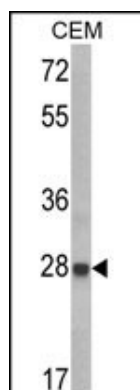
Background

IGFBP6 (IGF binding protein 6) is a member of the IGFBP family that regulates the actions of IGFs. It acts extracellularly in an autocrine/paracrine manner. IGFBP6 binds preferentially to IGF-II. IGFBP6 has been shown to inhibit the growth of tumour cells and to promote apoptosis.

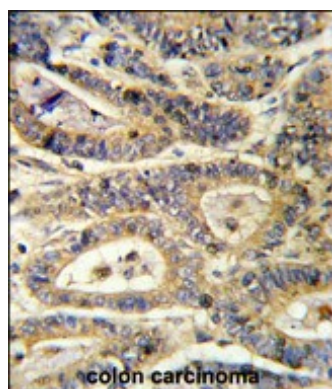
References

Guey,L.T., et.al., Eur. Urol. (2009)

Images

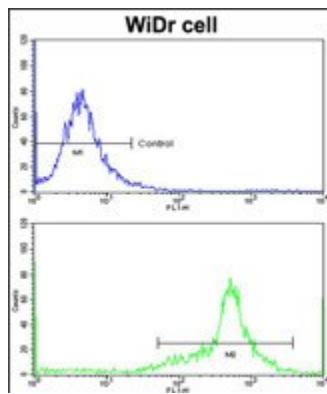


Western blot analysis of IGFBP6 Antibody (C-term) (Cat. #AP6764b) in CEM cell line lysates (35ug/lane). IGFBP6 (arrow) was detected using the purified Pab.



Formalin-fixed and paraffin-embedded human colon carcinoma reacted with IGFBP6 Antibody (C-term), which was peroxidase-conjugated to the secondary antibody, followed by DAB staining. This data demonstrates the use of this antibody for immunohistochemistry; clinical relevance has not been evaluated.

Flow cytometric analysis of widr cells using IGFBP6 Antibody (C-term)(bottom histogram) compared to a negative control cell (top histogram)FITC-conjugated goat-anti-rabbit secondary antibodies were used for the analysis.



Please note: All products are 'FOR RESEARCH USE ONLY. NOT FOR USE IN DIAGNOSTIC OR THERAPEUTIC PROCEDURES'.