

# ITM2A Antibody (N-term)

Purified Rabbit Polyclonal Antibody (Pab)

Catalog # AP6765a

## Product Information

---

Application	WB, FC, E
Primary Accession	<a href="#">O43736</a>
Reactivity	Human
Host	Rabbit
Clonality	Polyclonal
Isotype	Rabbit IgG
Clone Names	RB20556
Calculated MW	29741
Antigen Region	22-49

## Additional Information

---

Gene ID	9452
Other Names	Integral membrane protein 2A, Protein E25, ITM2A
Target/Specificity	This ITM2A antibody is generated from rabbits immunized with a KLH conjugated synthetic peptide between 22-49 amino acids from the N-terminal region of human ITM2A.
Dilution	WB~~1:1000 FC~~1:10~50 E~~Use at an assay dependent concentration.
Format	Purified polyclonal antibody supplied in PBS with 0.09% (W/V) sodium azide. This antibody is prepared by Saturated Ammonium Sulfate (SAS) precipitation followed by dialysis against PBS.
Storage	Maintain refrigerated at 2-8°C for up to 2 weeks. For long term storage store at -20°C in small aliquots to prevent freeze-thaw cycles.
Precautions	ITM2A Antibody (N-term) is for research use only and not for use in diagnostic or therapeutic procedures.

## Protein Information

---

Name	ITM2A
Cellular Location	Membrane; Single-pass type II membrane protein

## Background

---

ITM2A is induced during thymocyte selection and T cell activation and causes downregulation of CD8 when overexpressed in CD4(+)CD8(+) double positive thymocytes.

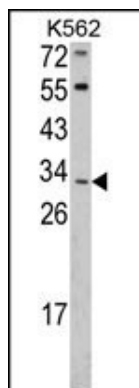
## References

---

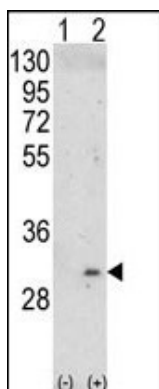
Gudbjartsson,D.F., et.al., Nat. Genet. 40 (5), 609-615 (2008)

## Images

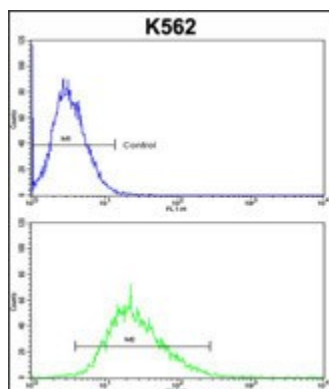
---



Western blot analysis of ITM2A Antibody (N-term) (Cat. #AP6765a) in K562 cell line lysates (35ug/lane). ITM2A (arrow) was detected using the purified Pab.



Western blot analysis of ITM2A (arrow) using rabbit polyclonal ITM2A Antibody (N-term) (Cat. #AP6765a). 293 cell lysates (2 ug/lane) either nontransfected (Lane 1) or transiently transfected with the ITM2A gene (Lane 2) .



ITM2A Antibody (N-term)(Cat. #AP6765a) flow cytometric analysis of k562 cells (bottom histogram) compared to a negative control cell (top histogram).FITC-conjugated goat-anti-rabbit secondary antibodies were used for the analysis.

Please note: All products are 'FOR RESEARCH USE ONLY. NOT FOR USE IN DIAGNOSTIC OR THERAPEUTIC PROCEDURES'.